

# Bedeker PRAGUE

restaurant guide | city guide

3  
2016  
FREE

**Everything You Always Wanted  
to Know About Prague\***  
*(\*But Were Afraid to Ask)*



Free online map

Restaurants Cafés Hotels Culture Nightlife



# METROPOLE

## ZLIČÍN

THE CENTRE OF FASHION AND ENTERTAINMENT

---

SHOPPING ЗАКУПКИ

FASHION МОДА

ENTERTAINMENT РАЗВЛЕЧЕНИЯ

RESTAURANTS РЕСТОРАНЫ

SERVICES УСЛУГИ

Shopping centre Metropole Zličín can offer you everything you could ever want and has all the space and facilities you need for the best possible use of your leisure time.

Торговый центр Metropole это, то что вам необходимо. Более 140 модных бутиков, товаров и услуг, ресторанов с разнообразной кухней и интересными развлечениями. Это огромное пространство и много возможностей отлично подходит для отдыха.



More information  
and a complete list of stores here.

Дополнительную информацию  
и полный список магазинов  
найдете здесь.

**140** SHOPS  
МАГАЗИНОВ

Airport 10 min. Bus No. 100  
Аэропорт 10 мин. Автобус № 100



IT'S ME

*Andrea Verešová*

Andrea Verešová



Blog4fashion.cz

metropole.cz



# contents

**8**

## facts & info

arriving, public transportations,  
history & the famous sites

**18**

## culture & events

The most popular exhibitions,  
concerts and shows

Interview with Kevin Costner

**30**

## service

Buy the ticket, rent a car or call  
nearest health emergency

**48**

## gastro

Prague's bests restaurants and  
cafés Beer Tips

**54**

## nightlife

Prague by night



# Restaurant **ZVONICE**

*Romance under medieval frames*



*The most romantic restaurant with wonderful view of Prague invites you in fully preserved Gothic belfry on 7<sup>th</sup> and 8<sup>th</sup> floor of Jindřiscka tower.*

*The unique historical place, cheerful service and the chef gastronomy will convince you of how the beauty things belong with even partitioned by centuries.*

**Jindřiscka street, Jindřiscka Tower, Prague 1**

**tel: 224 220 009**

**[www.restaurantzvonce.cz](http://www.restaurantzvonce.cz)**

Restaurateurs  
Hôteliers  
**Références**  
Recommended 2008

**GRAND RESTAURANT**  
**MAURERŮV VÝBĚR**  
*the Best interior 2006*

☆☆☆☆☆  
**INTERNATIONAL  
GASTRONOMIC GUIDE**  
*Restaurant of year 2006*

# Bedeker **PRAGUE**



VYDAVATELSTVÍ  
disk · data

**Disk Data s.r.o.**  
**Sokolovská 44, Praha 8**  
**www.pragmoon.cz**

**EDITORIAL:**  
general editor: Tomáš Chvála  
editor: Milada Hrušková  
translation: Vo Anh Tuan

**DESIGN & LAYOUT:**  
Disk Data s.r.o.  
mrkvickova@diskdata.cz

**SHOP ENSURES:**  
Disk Data s.r.o.

**ADVERTISEMENT ORDER:**

Lukáš Buriánek  
burianek@diskdata.cz  
Ivana Dufková  
dufkova@diskdata.cz  
Tomáš Koudelka

**DISTRIBUTION:**  
GRAND PRINC MEDIA, a.s.  
DISK DATA S.R.O.

**COVER PHOTO:**  
www.czechtourism.cz

Free distribution on selected places  
four times per year

Issue 3/2016 published: 12.10.2016

Registration: MK ČR E 19383

# ROD STEWART

FROM *Gasoline Alley* TO *Another Country*

## HITS 2016



7. 11. 2016 PRAHA O<sub>2</sub> arena



ANOTHER COUNTRY PRÁZE V PRODEJI

# APASSIONATA

European Tour



## CINEMA OF DREAMS

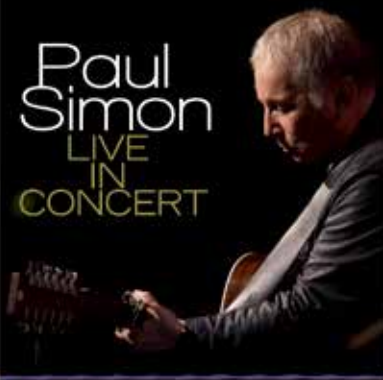


10. a 11. 12. 2016 PRAHA O<sub>2</sub> arena



# Paul Simon

LIVE  
IN  
CONCERT



17. 10. 2016 PRAHA O<sub>2</sub> arena



Nové album "Stranger to Stranger" právě v prodeji

VSTUPENKY V SÍTI



28. 11. 2017  
PRAHA O<sub>2</sub> arena

Minimální věk pro vstup: CINCONCERTS



LIVENATION.cz



# [ → ] WELCOME TO PRAGUE!



Welcome to Prague! Whether you've just landed, arrived by train, bus or car, we've got the allimportant low down on how to reach the city center using all the possible means of transportation, whether on a tight budget or otherwise.

Добро пожаловать в Прагу! Если вы только что приземлились, прибыли на поезде, автобусе или автомобиле, у нас есть все важные данные о том, как добраться до центра города, используя все возможные виды транспорта в зависимости от ваших средств.

## ↓ 1. ARRIVING IN PRAGUE BY PLANE

## ↓ 1. ПРИЫТИЕ В ПРАГУ НА САМОЛЕТЕ

The airport is located on the northwest edge of Prague, some 20km (12 miles) from the city center. Although Prague boasts other, smaller airports, all international flights operate through Václav Havel Airport Prague. Important related phone numbers include +420 220 113 314 (general info), +420 220 116 072 (baggage claim) and +420 220 114 283 (lost & found).

Аэропорт расположен на северозападной окраине Праги, приблизительно в 20 км от центра города. Хотя Прага может похвастаться другими, меньшими аэропортами, все международные рейсы осуществляются через аэропорт Рузине. Необходимыми телефонными номерами являются +420 220 113 314 (общая информация), +420 220 116 072 (багаж) и +420 220 114 283 (стол находок).

## ↓ GETTING TO THE CITY CENTRE

If you've just arrived at the airport, getting downtown is generally, depending on the traffic, a matter of some 20 to 30 minutes (if you make use of a taxi or a shuttle service; see below), or 50 minutes if you use the cheaper yet convenient and comfortable public transportation.

## ↓ КАК ДОБРАТЬСЯ ДО ЦЕНТРА ГОРОДА

Если вы только что прибыли в аэропорт, возможность добраться до центра города, как правило зависит от транспорта. Интервалы составляют от 20 до 30 минут (в том случае, если вы пользуетесь такси



# IMAGE

BLACK LIGHT THEATRE

НОВЫЙ  
адрес  
Národní 25  
Prague 1

современный  
танец

пантомима

ЧЕРНЫЙ &  
ТЕАТР



Новый адрес, новый театр, новый опыт.

[www.imagetheatre.cz](http://www.imagetheatre.cz)  
image@imagetheatre.cz +420 / 222314448 +420 / 732156343

## FACTS &amp; INFO

↓...BY PUBLIC  
TRANSPORTATION

Bus presents the cheapest way of reaching city center. It links the airport with the terminus of one of Prague's three subway lines. The drawback may be the fact that you need to buy a bus ticket, for which you'll need Czech crowns. Use the ATMs in the arrivals hall to get Czech crowns, rather than changing money at the overpriced exchange offices. You can either buy your ticket from the kiosk or the transport information desk in both arrival halls (open 7AM – 10PM), from the coin vending machines located right at the bus stop platform, or directly from the driver, although this will cost a couple extra crowns. The ticket price is 26 Czech crowns (1EUR / 1.3USD) for transfer ticket that remains valid for the follow-up subway ride, or for a total of 75 minutes, plus an extra 13 crowns for larger pieces of luggage.

## BUS # 119

This will probably be most people's choice as the 119 provides the quickest connection to the historical center. Depending on the time of day, it runs every 7 to 20 minutes and gets you to the A line of Prague's subway. Hop on, remember to validate your ticket, and don't get off until the final stop (Dejvická). The subway entrance is just next to where you get off. The bus runs from 4:18AM until around 12:10 AM at night.

## BUS # 100

The 100 bus links the airport with the B-line of the Prague subway. Just get off at Zličín, the final stop. The 100 runs every 15 minutes throughout the day and every half hour after 7PM. The ride takes 15 minutes, but expect another 20 minutes

или трансфером, см. ниже), или 50 минут, если вы пользуетесь более дешевым и удобным общественным транспортом.

↓... НА ОБЩЕСТВЕННОМ  
ТРАНСПОРТЕ

Автобус представляет самый дешевый способ как добраться до центра Праги. Он связывает аэропорт с терминалом одной из трех линий пражского метро. Недостатком является то, что вам будут нужны чешские кроны, чтобы купить билет на автобус. Пользуйтесь банкоматами в зале прибытия, чтобы получить чешские кроны, а не менять деньги в обменных пунктах по повышенной цене.

Вы можете купить билет в киоске или в информационном бюро в обоих залах прибытия (работает с 7 утра до 10 вечера), из монетных автоматов, расположенных на автобусной остановке, или прямо у водителя, хотя это будет стоить пару дополнительных крон.

Цена билета с пересадкой составляет 26 чешских крон (1EUR / 1.3USD). Он остается в силе для следующей поездки метро - в общей сложности действителен в течение 75 минут. Для багажа больших размеров вы заплатите следующих 13 крон. Обратите внимание на то, что торговые автоматы и шоферы не принимают иностранную валюту. Автобус удобный, чистый и безопасный способ сообщения с центром Праги для тех, кто хочет экономить. Однако, автобус может быть довольно переполненным в часе пик!

## АВТОБУС № 119

Вероятно, большинство людей выберет автобус № 119, который обеспечивает быструю связь с историческим центром. В зависимости от времени суток, он ездит каждые 7 - 20 минут и соединяет пассажиров с линией пражского метро. Садитесь на автобус и не забудьте закопостризовать свой билет. Поезжайте до конечной станции метро



Spanish Synagogue

Regular concerts in the Spanish Synagogue  
4 times a week in 5:30 pm / 17:30 hod.

Bolero, Carmina Burana  
The best of czech and world music  
The best of Gershwin  
Hallelujah

[www.bmart.cz](http://www.bmart.cz)  
Věžeňská 1, Praha 1



**FACTS & INFO**

of subway ride if you're aiming to reach the city center afterwards by metro. The bus runs from 5:30AM until around 11:50 PM.

**AIRPORT EXPRESS BUS**

The Airport Express bus service links the airport with the Hlavní nadrazi train station; it runs every half hour and the ride takes 40 minutes. Although part of Prague's public transportation system, special fares apply: tickets can be purchased solely from the driver and run for 50 crowns (with no extra luggage fees). The AE runs from from 5:00AM to 10:00PM.

**TRAVELLING AT NIGHT**

If you want to use the public transportation at night, look out for the # 510 bus, operating between midnight and 3.30AM and linking the airport with the tram at Divoka Sarka. From there, take the tram # 51 to the city center. Note that the night bus runs every 30 minutes.

**↓...BY SHUTTLE**

Various companies run shuttle door-to-door services, or drop you off at the city center. They are generally priced lower compared to taxis, and can be easily found outside the terminals. The CEDAZ minibus shuttles run every half hour and costs 120 crowns per person, dropping you off at the city center. The service operates between 5:30AM and 9:30PM. CEDAZ will also drive you directly to any given address, but you need to pre-book (call +420 220 116 758 or go to [www.cedaz.cz](http://www.cedaz.cz)). Other shuttle services include Prague Airport Transfers who accept credit cards ([www.prague-airport-transfers.com](http://www.prague-airport-transfers.com)).

Дейвица. Вход в метро находится рядом с местом, где вы будете выходить из автобуса. Автобус курсирует с 4ч. 18мин. утра примерно до 00 ч. 10 мин.

**АВТОБУС № 100**

Автобус № 100 соединяет аэропорт с линией Б пражского метро. Выйдите на конечной остановке Зличин. Автобус № 100 ходит каждые 15 минут в течение дня и каждые полчаса после 7 часов вечера. Поездка продолжается 15 минут, но вас ждет еще 20 минут езды на метро, если вы на нем собираетесь добираться до центра города. Автобус курсирует с 5ч. 30мин. утра примерно до 23ч.50мин. ночи.

**АВТОБУС AIRPORT EXPRESS**

Автобус Airport Express (AE) связывает аэропорт с Главным вокзалом (Hlavní nadrazi). Он ездит каждые полчаса, и поездка длится 40 минут. Хотя AE является частью системы общественного транспорта Праги, здесь применяются специальные тарифы: билеты можно приобрести только у водителя и в цене 50 крон (без дополнительной оплаты за багаж). AE ездит с 5ч. утра до 10ч. вечера.

**НОЧНЫЕ РЕЙСЫ**

Если вы хотите использовать общественный транспорт в ночное время, обратите внимание на автобус № 510, который ездит между полночью и 3ч. 30мин. утра и связывает аэропорт с трамваем на остановке Дивока Шарка (Divoka Sarka). Оттуда добирайтесь на трамвае № 51 до центра города. Обратите внимание - ночной автобус ходит каждые 30 минут.

**↓..НА МАРШРУТНОМ ТАКСИ**

Различные компании используют челночное сообщение „от двери до двери ... или высаживают вас в центре города. Их цены, как правило, ниже, чем в такси, и такой тип такси можно легко найти за пределами терминалов. Челночные микроавтобусы CEDAZ ходят каждые полчаса, и проезд в центр города стоит 120 крон на человека. Микроавтобус курсирует с 5ч.30мин. утра до 9ч.30мин. вечера. CE-



## ↓...BY TAXI

Prague taxi drivers are notorious for overcharging tourists. Generally, you should be on the safe side with the fleet of AAA-labelled taxis waiting in front of the terminal. The ride will cost around 500 – 700 crowns. Don't shy away from contacting a competing company, but make sure to always check the price beforehand, whatever company you've chosen! You shouldn't ever have to pay over 900 crowns.

DAZ вас также отвезет по любому заранее заказанному адресу (+420 211 111 111 или посетите [www.cedaz.cz](http://www.cedaz.cz)). Другие услуги включают трансфер из Аэропорта Прага, где принимают кредитные карты ([www.prague-aeroporto-transfers.com](http://www.prague-aeroporto-transfers.com)).

## ↓... НА ТАКСИ

Пражские таксисты известны своим обчитыванием туристов. Поэтому на всякий случай пользуйтесь такси с надписью AAA, ожидающих перед терминалом. Поездка будет стоить около 500 - 700 крон. Не бойтесь воспользоваться услугами конкурирующих компаний, но заранее убедитесь в цене. Независимо от компании, которую вы выбрали, вы никогда не должны платить более 900 крон.



## ↓2. ARRIVING IN PRAGUE BY TRAIN

International trains arrive at the central station, Hlavní nádraží, often referred to as Praha hl.n. The station is directly connected with Prague's subway system and located right in the city centre. If arriving after dark, we highly recommend hopping on the subway (remember to buy a ticket) rather than walking out and through the surrounding park. Most of the station itself has just been refurbished and boasts a modern look with plenty of kiosks, drug stores and fast-food joints.

## ↓2. ПРИЕЗД В ПРАГУ НА ПОЕЗДЕ

Международные поезда прибывают на центральную станцию, Hlavní nádraží, часто называемую Praha hl.n. Станция непосредственно связана с пражским метро и расположена в самом центре города. Если вы прибываете после наступления темноты, мы настоятельно рекомендуем вам ехать на метро (не забудьте купить билет) и не проходить через окружающий парк. Большая часть самой станции только что была отремонтирована и может похвастаться современным видом с множеством киосков, аптек и ресторанов быстрого питания.

## FACTS & INFO

### 3. ARRIVING IN PRAGUE BY BUS

Florenc is the central bus station; located in the city centre, it is also directly adjacent to Prague subway's station Florenc (a transfer station between the lines C and B). Like the central train station, Florenc has recently undergone a major facelift and now boasts a pleasant and clean arrivals & departures hall with kiosks and fast-foods (Burger King, anyone?), and most importantly a big screen showing the bus times and the respective platforms.

### 3. Приезд в Прагу на автобусе

Флоренц не только является центральной автобусной станцией, расположенной в центре города, но и в непосредственной близости от пражской станции метро Флоренц (переход между линиями С и В). Как и центральный железнодорожный вокзал, станция Флоренц недавно подверглась значительной реконструкции и теперь может похвастаться приятным и чистым залом приездов и отъездов с киосками и ресторанами фаст-фуд (желаете Burger King?), а самое главное - большим экраном с отъездами и приездами автобусов и с указанием соответствующих платформ.

[ 4 ] arriving



### 4. ARRIVING IN PRAGUE BY CAR

Prague falls victim to traffic jams and a lack of legal parking spaces (streets with blue-marked areas on the side are reserved for residents and you run the risk of having your car towed if you park there). This is why we recommend using the so-called P+R's (park and ride) parking places, situated near all highways. Find more info at [www.dpp.cz/en/parking](http://www.dpp.cz/en/parking).

### 4. Приезд в Прагу на автомобиле

Прага становится жертвой пробок и недостатком законных парковочных мест. Улицы с полосой синего цвета на стороне означают области зарезервированные для жителей. В этом случае вы рискуете, что ваш автомобиль будет отбуксирован при паркинге. Именно поэтому мы рекомендуем использовать так называемые стоянки парк анд райд (P + R) - парковочные места, расположенные вблизи всех магистралей. Более подробную информацию найдете на [www.dpp.cz/en/parking](http://www.dpp.cz/en/parking).

## PRAGUE'S PUBLIC TRANSPORTATION SYSTEM

Prague's public transportation system is generally reasonably clean, very efficient, runs on time, and its network spans the whole city; with the price of 32 CZK for a transfer ticket (1EUR / 1.3USD), it cannot be beat. If you don't need to venture out of the center, you can confine to using the subway (or metro, as it's called here) and trams; buses service the further-away neighbourhoods. Let's look more closely at the various tickets you can purchase.

Tickets can be bought from the numerous vending machines in all the metro stations and at many tram stops (always keep coins at hand), or from most tobacco stores / kiosks.

**24-hour pass:** 110 CZK  
**3-day pass:** (72 hours): 310 CZK

### ONE-OFF TICKETS

30 min. / 5 stops / no transfer ticket: 24 CZK, 90 min. transfer ticket: 32 CZK

Remember to validate your ticket upon first entering the metro / boarding a tram or bus. (i.e. slip the ticket into one of the yellow boxes and wait for the info to be stamped on it).

For more information about Prague Public transport visit [www.dpp.cz](http://www.dpp.cz) or call the free info line 296 191 817.

## СИСТЕМА ОБЩЕСТВЕННОГО ТРАНСПОРТА В ПРАГЕ

Общественный транспорт в Праге, как правило, достаточно чистый, очень эффективный и точный. Его сеть охватывает весь город. Цена билета 32 крон за поездку с пересадкой (1EUR / 1.3USD) очень выгодна. Если вам не надо выходить из центра, вы можете ограничиться метро и трамваями. Автобусы следуют в окрестности города. Давайте более внимательно рассмотрим различные

типы билетов, которые можно приобрести. Билеты можно приобрести в многочисленных торговых автоматах на всех станциях метро и на многих трамвайных остановках (всегда имейте при себе монеты), или в большинстве табачных магазинов или киосков.

**Суточный билет (24 часа):** 110 крон  
**Трехдневный билет(72 часа):** 310 крон

### РАЗОВЫЕ БИЛЕТЫ

30 минут / 5 остановок / без пересадки: 24 крон  
90 минут /с пересадкой: 32 крон

Не забудьте закомпостировать свой билет при первом входе в метро, в трамвай или в автобус. (т.е. вложите билет в одну из желтых коробок и подождите пока билет не будет закомпостирован). Для получения дополнительной информации о пражском общественном транспорте посетите [www.dpp.cz](http://www.dpp.cz) или трансформируйтесь по телефону на бесплатной линии 296 191 817.



## FACTS & INFO

For over 1000 years, Prague has served as the political, cultural and economic centre of the Czech state. Having been the seat of two Holy Roman Emperors during the gothic and renaissance periods, it also had the status of the Holy Roman Empire capital. Prague's history commenced in the year 870, although evidence shows the area had been inhabited since the Stone Age. The city flourished during the 14th century, under the reign of King Charles IV, who, among other deeds, ordered the building of the famous Charles Bridge or Saint Vitus Cathedral, the oldest gothic cathedral in central Europe, and Charles University, the oldest university in central Europe. Prague was then the third-largest city in Europe. Now home to some 1.2 million inhabitants, Prague became the capital of the newly set up Czechoslovakia in 1918, with the end of WW I and the dissolution of the Austro-Hungarian Empire. In 1992, Prague's historic center became a UNESCO world heritage site, and is currently one of the world's most popular tourist destinations.

На протяжении более 1000 лет, Прага служит политическим, культурным и экономическим центром чешского государства. Она была пристольным городом двух императоров Священной Римской империи в готическом периоде и в эпохе Возрождения. Прага также имела статус столицы Священной Римской империи. История Праги началась в 870г., хотя есть сведения о том, что область была населена с периода каменного века. Город процветал в течение 14-го века, во времена правления короля Карла IV, который, наряду с другими проектами, приказал построить знаменитый Карлов мост, кафедральный готический собор Святого Вита, и Карлов университет - старейшие постройки в Центральной Европе. В то время Прага была третьим по величине городом Европы. Сейчас здесь проживает около 1,2 млн. человек. После окончания Первой мировой войны и распада Австро-Венгерской империи в 1918 году Прага стала столицей вновь созданной Чехословакии. В 1992 году исторический центр Праги стал принадлежать к Всемирному наследию ЮНЕСКО, и в настоящее время является одним из самых популярных туристических мест в мире.






# Josef ISTLER

8. 10. 2016–15. 1. 2017

Museum Kampa

  
museum kampa  
nadace jana a medy mládkových

[www.museumkampa.cz](http://www.museumkampa.cz)

Museum Kampa – Nadace Jana a Medy Mládkových  
U Sovových mlýnů 503/2, 118 00 Praha 1  
Open daily from 10 a.m. to 6 p.m.

Josef Istler: Painting, 1947, oil, plywood  
33 × 46 cm, private collection

General Partner of Museum Kampa



Main Partners of Museum Kampa

 UniCredit Bank



Partners of Museum Kampa



Exhibition Partner

 galerie  
Maldoror

Media Partners of Museum Kampa

**BigBoard**

 **IMPULS**  
Rádío

**BLESK**

**BLESK.CZ**

Special Thanks

**RETRO**  
GALLERY

## DIFFERENT PERSPECTIVES

**P**henomenons are a tricky thing. Often because they can have just as strong supporters as opponents. Within the framework of fair play is necessary not to close the eyes.

An example is a music star Justin Bieber. It is a celebrity that many people does not like that much. But it goes without saying that he is one of the biggest music stars ever lived. And this is something that should be taken into account and also because his concert shall be perceived as one of the biggest events of the season.

But Bieber not only divides the crowds. For those who are into to the classics, Elton John and the legendary band The Cure are coming to Prague. And they already have their opponents. Also Samara will sweep through the cinemas in new Rings movie. Is the horror genre universally grateful? Nope. There are people who consider it a waste, and evidence of "the decline of civilization."

Each one simply has a different perspective. Perhaps you find yours in our tips.

th.



## MASTERMINDS

Action / Comedy, USA, 2016  
 Director: Jared Hess  
 Stars: Kristen Wiig, Zach Galifianakis  
 Release date: 13.10.2016

So absurd story that it has to be based on real events! David is an uncomplicated man who got stuck in a monotonous life. The only exciting moment in his life

is flirting with his colleague Kelly, who will soon retract him into hard believable adventure. A group of not very intelligent losers, under the leadership of Steve is planning to rob a bank, and David has to help them, of course. Despite the absolutely amateurish plan something impossible happens, and they have suddenly 17 million dollars in the pocket. And because they are idiots, they will immediately waste the money.



## INFERNO

Thriller, USA, 2016  
Director: Ron Howard  
Stars: Tom Hanks, Felicity Jones  
Release date: 13.10.2016



This time Harvard symbolist Robert Langdon (Tom Hanks) finds himself in the very heart of Italy, to help solve the mystery, which is notably linked to one of the greatest literary works of all time - Dante's Hell. In his mysterious mission Langdon must confront the unknown, ferocious opponent; Walking through not only the labyrinth of Florence, Venice or Istanbul's streets, secret passages, hidden chambers, but also a labyrinth of allusions and codes.

## JACK REACHER 2

Action / Drama, USA, 2016  
Director: Edward Zwick  
Stars: Tom Cruise, Cobie Smulders  
Release date: 20.10.2016



Jack Reacher returns to his headquarters of his old unit. He wants to be there in person to meet with Major Susan Turner, until that time just warm exciting voice from the phone. However, behind the desk of the officer in charge does not sit Mrs. Turner. And Reacher learns two shocking reports - one very personal and one that could put him to prison. When you are in danger, you have to flee or fight. Reacher decides to fight.

## The City of Prague Museum



LANGWEILŮV  
MODEL  
PRAHY  
LANGWEIL'S  
MODEL  
OF PRAGUE  
1826-1837

Unique paper model of Prague. It provides unique evidence of how the Old Town, Lesser Town and Prague Castle looked before the redevelopment of Prague at the end of the 19<sup>th</sup> and start of the 20<sup>th</sup> centuries.



MUZEM  
HLAVNÍHO  
MĚSTA  
PRAHY



[www.muzeumprahy.cz](http://www.muzeumprahy.cz)

## STAR PHOTOS

Dům fotografie, Prague 1  
Price: from 60 Kč  
11.10.2016



Sam Shaw (1912-1999) is one of the most important photographers of his generation. His more than fifty-year career began in Collier's magazine, for which in the 40s of the last century created a series of „How America lives.“ Shaw has traveled throughout the Uni-

ted States to capture ordinary life in all of its diverse corners of their homeland. Later, his name became synonymous with magazine covers Life and Look. In the 50s he shifted attention to the world of film, where he charted through hundreds of portraits of movie stars.

## THE ACCOUNTANT

Drama, USA, 2016  
Director: Gavin O'Connor  
Stars: Ben Affleck, Anna Kendrick  
Release date: 27.10.2016



Wolff (Ben Affleck) is a mathematician with more affinity for numbers than people. Using a small-town CPA office as a cover, he makes his living as a forensic accountant for criminals. With a Treasury agent (J.K. Simmons) hot on his heels, Christian takes on a state-of-the-art robotics company as a legitimate client. As Wolff gets closer to the truth about a discrepancy that involves millions of dollars, the body count starts to rise.

## THE RINGS

Horror, USA, 2016  
Director: F. Javier Gutiérrez  
Stars: Matt Teegarden, Johnny Galecki  
Release date: 27.10.2016



Who would have thought that the cult horror film The Ring was introduced long fourteen years ago. And we are still getting nervous just with the look at the mysterious footage on the tape. So it's not surprising that the Samara returns. The story of the third movie, titled The Rings, namely builds on the original films, but we face an entirely new cast. Can the „analog“ Samara adapt to the new digital age? Apparently she can

## THE CURE

O2 arena, Prague 9  
Price: from 1290 Kč  
22.10.2016



Over the past seven years, the band played many prestigious concerts in London and was one of the stars of Europe's leading festivals. During the Cure the Tour 2016 will be presented Robert Smith (vocals / guitar), Simon Gallup (bass), Jason Cooper (drums), Roger O'Donnell

(keyboards) and Reeves Gabrels (guitar). You can listen to the music of their thirty-seven years long career of The Cure, a mixture of hits, rarities, favorite and unreleased tracks in the brand new stage presentation which promises that this show will be one of the concert event of the year.



# TRANSMISSION THE LOST ORACLE

O2 arena, Prague 9  
Price: from 1399 Kč  
29.10.2016

On Saturday, October 29 the Transmission Festival's will celebrate 10-year anniversary with the premiere show called ,The Lost Oracle. This unique event promises to become an unforgettable night. More than ever, this show will be an audiovisual spectacle, which connects audio and visual world. You



can expect an extraordinary amount of lasers in combination with more than 300 lighting installations, which will be precisely connected with special effects, video-mapping and performances by dancers and actors, thus creating an exceptional show, which certainly amaze you and your senses.

# DOCTOR STRANGE

Action / Fantasy, USA, 2016  
Director: Scott Derrickson  
Stars: Benedict Cumberbatch,  
Chiwetel Ejiofor, Rachel McAdams  
Release date: 27.10.2016

One thing has to be said about the Marvel movies. Except the generic Avengers they each are trying to have a distinctive style. Doctor Strange goes through spirituality and although it might not have been the intention it resembles a lot with reality playing iconic movie Inception of Christopher Nolan. Which is clearly perceived as an advantage! Visually, it is about something a little different and so is the reason why to go and see the new Marvel movie in cinema - except of amazing cast. The atmosphere is also very interesting, because the picture is directed by Scott Derrickson, who has established himself in the horror genre (The Exorcism of Emily Rose, Sinister).



# ROD STEWART

O2 arena, Prague 9  
Price: from 1890 Kč  
7.11.2016



He has been astonishing the world for fifty years, and now for the first time in the Czech Republic. The new Rod Stewart tour From Gasoline Alley to Another Country Hits 2016 will bring the greatest hits from 1970 to 2016. The O2 Arena will welcome the living legend of British rock on 7 November. Rod's concert performances are a unique and powerful experience, as well as his latest, already the twenty-ninth album, Another Country, which was released in October 2015 and has been received well by critics. The album was awarded platinum status and climbed to the second place in the British charts. Fans will enjoy live classical and, of course, the tracks from his recent successful titles Time and Another Country will be played as well.

## SNOWDEN

Thriller/ Drama, USA, 2016  
 Director: Oliver Stone  
 Stars: Joseph Gordon-Levitt, Shailene Woodley, Melissa Leo, Nicolas Cage  
 Release date: 10.11.2016

The film follows Edward Snowden, an American computer professional who leaked classified information from the National Security Agency to The Guardian in June 2013. Among other things, the classified information revealed extensive illegal cyber-snooping on millions of unsuspecting American citizens which was unknown to even Congress at the time. Films directed by legendary Oliver Stone (Platoon, JFK, Wall Street).



## JUSTIN BIEBER PURPOSE WORLD TOUR

O2 arena, Prague 9  
 Price: from 1390 Kč  
 7.11.2016



The hype around Bieber's new music has hit an all-time high and shows no signs of slowing down. With a global #1 album release in over 100 countries and consecutive #1 singles, the album is shattering records worldwide including a record for having 17 songs in the Hot 100 in one week (beating The legends like Beatles and Drake) and a new Spotify record for global streaming with over 200 million album streams first week. Besides The Knocks as a guest, megastar Justin Bieber has invited up and coming band MiC LOWRY to open the Prague show.

## ELTON JOHN

O2 arena, Prague 9  
 Price: from 1890 Kč  
 7.11.2016

The audience's enthusiasm has no end, so his spell binding concerts in Prague have been continued. Elton John will perform at the O2 Arena on 26 November, a day before the first Advent Sunday of 2016. English pop singer, composer and pianist Elton John will present the greatest hits of his stellar fifty-year career accompanied by his band. Elton John is one of the most successful solo artists in the history of popular music, surpassed only by Elvis

Presley in the USA. Singer, composer and pianist Sir Elton Hercules John, holder of the Order of the British Empire, was born on 25 March 1947 in London. He reportedly astonished his family by playing the piano as a 3-year-old when he performed the song The Skater's Waltz by heart.





**CHOOSE  
YOUR TOUR**



*beer experience*

Entrance to the museum with guide and 6 beer tasting with beermaster, bottle your own beer. **580 CZK**

**BEER MUSEUM** | *offering*

**BEER TASTING**  
**historical cellar**  
**CZECH BREWING**  
**TRADITION**

**MULTILINGUAL GUIDE**

*museum + tasting*

Entrance to the museum with 4 beer tasting.

**280/200 CZK ISIC**

**CZECH BEER MUSEUM PRAGUE**  
**HUSOVA 7 PRAHA 1**



*Perničkuv sen*

Haštalská 757/21, Prague 1 - Old Town  
Open daily 10-18. tel.: +420 607 773 350  
info@pernickuvsen.cz, www.pernickuvsen.cz

Don't miss chance to visit our fabulous, Traditional, Czech Gingerbread & Sweet shop in the Old Town. Decorate your own gingerbread, try our delicious choice of sweets!



# FEEL LIKE IN HOLLYWOOD!



**A**lthough you won't find any Hollywood movie stars in the Czech streets, many of them were filming here. So you can make a picture of Czech sites that adorn a lot of famous Hollywood movies.

We have to start with the blockbuster Mission: Impossible from 1996 with Tom Cruise in the lead role. It was the first major Hollywood production that visited Prague and the filmmakers had used a number of gorgeous Prague scenes. The party at the embassy was filmed at the National Museum, the escape from modern glass restaurant (cover photo) on the Old Town Square. In this case, however, keep in mind that the restaurant itself doesn't exist – it was made just for the purpose of filming the movie.

After 15 years the production of Mission: Impossible returned to Prague, this with the fourth chapter – Ghost Protocol. They used the Main Railway Station (the opening scene with killed agent) or the corner house in the street Pštrossova 17, where Ethan Hunt ran from the police. In 2002 Anthony Hopkins and Chris Rock visited Prague together to shoot an action thriller Bad Company. Rock was chased

by bad guys in Thun Street in Lesser Town (Malá Strana), Hopkins' agent went to helicopter him through Castle stairs (Zámecké schody). Together they went to the Castle Square. They also used the Shooter's Island (Střelecký ostrov) in the Old Town (the scene with atomic bomb dealer).

Even the legendary vampire slayer Blade used the streets of Prague in his second adventure movie. From the entrance next to the pizzeria in the Sokolovská Street, the filmmakers made a vampire blood bank. And for the seat of vampire family Damaskinos they used secluded place of Vaníčková Street.



Prague had a key role in the action movie of Vin Diesel xXx filmed in 2002. Beginning of the movie was shot on the Old Town Square (the producers managed to depopulate it, which was almost an im

possible task), then the camera wandered the Týnská Street, the Powder Gate, the Republic Square and the seat of the Czech philharmonic – Rudolfinum. In 2004 our country was visited by Wolverine – Hugh Jackman, in those times wi-



thout his comic book claws, but with his long coat and hat as Van Helsing. The battle in the village with three brides of Dracula (probably the best part of the movie) was filmed at the Kunratice Castle in Prague 4. Then the hero walks the street Na Kampě under the Charles Bridge, where



one of the brides offers him a trade. The magnificent ball of vampires was filmed in the Saint Nicholas Church.

This list of Hollywood hits, which included Prague to its scenes, naturally doesn't end. Furthermore, there were shot movies like The Bourne Identity (street Kampa, street of Political prisoners, the Senovážná square) or A Knight's Tale (Prague Castle, the Charles Bridge). Before the walk in our metropolis we recommend to watch all of these mentioned movies.

th.

# SEGWAY TOURS

## 3 HOURS TOUR IN 7 LANGUAGES

PHONE

+420 731 238 264

MEETING POINT NEAR CHARLES BRIDGE

OUR PRICE

1500 CZK  
/PERSON

segwayfun.eu



# INTERVIEW: Vlastimil Musil

**H** *He deals with Bohemian garnet processing already for 30 years. The production of jewellery becomes for him almost whole-life fulfilment of interests. In the interview with him, you can simply recognize a love to craft: Even after such a long time, he can't talk about the garnet without a spark in his eyes. And also, he has a penchant for tie clips and cufflinks. That all is the sales and marketing director of co-operative Granát Turnov Vlastimil Musil.*

**Can you describe, in what lies the uniqueness of Bohemian garnet?**

Bohemian garnet is unique because of its originality and bloody red color. Because we mine and process it in Czech Republic, it became our national tradition and national wealth. Its bloody red color is unmistakable and together with the tradition and national meaning that stone makes also the whole jewel unique.

**How is it with Bohemian garnet worldwide?**

Our co-operative has its customers worldwide, from United States through Europe to Japan. Ask foreign tourists, they'll tell you, what am I talking about. Jewelry with Bohemian garnets are very favored between foreign tourists or customers in foreign countries.

**Why would you recommend Bohemian garnet?**

A customer, who bought original jewel with Bohemian garnet, chose a right variant. He bought something original, he bought a present or jewel, which has a direct relation to visited country, and when he wears this jewel, even after a long time, he will remember with a pleasure those nice whiles spent in Prague or in other Czech city or town.

**How one recognizes Bohemian garnet?**

Jewelry with Bohemian garnets have its specific characteristics and shape. Since Bohemian garnets are quite little stones, the jewel is characteristic by a big field of small, bloody red stones. Its size is roughly 2.5 to 5 mm. Original jewellery is delivered together with a certificate of authenticity, which is equipped with a holographic label in a shape of logo of our co-operative and it is made under trademarks Český granát (Bohemian garnet) and Granát Turnov (Garnet Turnov). Each jewel is marked by hall-mark in a shape of letter "G".

**You lead even a museum of Bohemian garnet in Turnov. What all does it offer?**

A visitor may become familiar there with a history of both the extraction, and also processing of Bohemian garnet. Even more this year, we'll celebrate 60 years of this tradition. In museum, customer center and Galerie Granát (Gallery Garnet) we perform these works to visitors and they can try then the production themselves.

That is very impressive and it catches eye of many incomers. In ground floor, there are our stores, where tourists can buy our goods with advantage.





Granát, artistic manufacturing cooperative, Turnov The manufacturer of the traditional jewelry from Bohemian garnet. The biggest collection with modern design patterns. The only owner of a Bohemian garnet strip mine.

Shops: Praha 1, Dlouhá 28 a 30 - Praha1, Panská 1 - Praha 1, Pánská pasáž,  
Na Příkopě 23 - Turnov, nám. Českého ráje 4 - Liberec, Pražská 502/3 - České  
Budějovice, Dr. Stejskala 9 - Český Krumlov, Latrán 53

[www.granat.cz](http://www.granat.cz), [www.granat-shop.cz](http://www.granat-shop.cz)



## PYLONES DESIGN SHOP

Karlova 178/22, 110 00 Pra 1  
Phone: +420 774 772 402  
[www.pylones-eshop.cz](http://www.pylones-eshop.cz)

PYLONES designs, manufactures and retails a range of beautifully designed household objects which are fun, colorful and affordable. By producing its own-label products in the company's distinctive packaging, PYLONES offers its customers an ideal gift-shopping experience. With a range including kitchen instruments, bathroom accessories, office supplies, baby gifts, jewellery, stationery and personal accessories, every product is designed and produced exclusively for PYLONES.



## GRANÁT TURNOV

### ГРАНАТ ТУРНОВ

Dlouhá 28 – P-1, Pánská pasáž - Na Příkopě 23 - P-1, Panská 1/892 P-1

В этом году кооператив художественного производства „Гранат Турнов“ отмечает 60 – летнюю традицию производства украшений с чешскими гранатами в г. Турнове и в Чешской Республике. „Гранат Турнов“ в настоящее время является самым большим производителем украшений с чешскими гранатами. Чешские гранаты известны во всем мире. Если вы желаете купить или просто увидеть различные драгоценные камни, посетите три наши магазины в самом центре Праги.



## KUBISTA

Ovocný trh 19, Prague 1  
Phone: +420 224 236 378  
[www.kubista.cz](http://www.kubista.cz)

Kubista was created as a platform for exploring treasures of classical Czech art, architecture and design. Since its inception they are ensuring you that they present the best of the major eras of the last century, particularly the Czech Cubism and Art Deco. Originals, replicas and unique design inspired by the classic Czech period of Czech Cubism, wide selection of exclusive porcelain, ceramics, glass, textiles, jewelry, books, furniture. That's all is waiting for you in Kubista.



## PERNÍČKŮV SEN

Haštalská 757/21, Prague 1  
Phone: +420 607 77 33 50  
[www.pernickuvsen.cz](http://www.pernickuvsen.cz)

„Perníčkův sen“, which smells even behind the corner, you can hardly miss. They will prepare a custom made gingerbread to your liking, workshops, birthdays and other events. „Perníčkův sen“ is a family business with still relatively short tradition, which aims to revive honest Czech craft, which dates back far into history references. Gingerbreads are mainly the passion and honest materials. Like the local confectioners baked these honey pastries at home for their children, they bake it in the same way every day for you. Maximal quality is guaranteed.



## LONDON CALLING

Seifertova 20, Prague 3  
Phone: +420 604 566 572

The original Žižkov secondhand outlet focusing on models from London. Sea of interesting men's shirts (usually with movie themes or similar treat for lovers of stylish clothing), women's tops, dresses and lots of other things (books, comic books and CDs) from the city over the Thames. All at great prices. If you have weakness for the British style, or you want to buy something "little different", London Calling will be your favorite place to buy.



## CENTRUM ČERNÝ MOST

Chlumecká 765/6, 198 19 Prague 9  
Phone.: +420 281 918 100  
[www.centrumcernymost.cz](http://www.centrumcernymost.cz)

New shopping center Černý Most is recognized as the most modern commercial shopping center in the Czech Republic. And it's not just a hype. This project was designed by leading British architects Benoy Company which is with its sophisticated and unique designs known throughout the world. The result is a truly amazing shopping center that is inspired by its airiness like in U.S. commercial malls.



**PYLONES**  
créateur d'objets à Paris



*Pylones stores:*

Karlova 118/22  
28.října 110/11

**SERVICE****Prague Airport Transfers**

The best and biggest airport transfer company in the city, Prague Airport Transfers is here to provide you with the best one-stop transportation service with minimal fuss and maximum comfort. You can be sure that you will not find a better airport transportation service anywhere else.

**Rate: 290–2190 CZK/day**  
**Velvarská 1701/25, Prague 6**  
**Phone: 800 870 888**  
**[www.prague-airport-transfers.co.uk](http://www.prague-airport-transfers.co.uk)**

**A-Rent Car**

Discount rates are provided for medium and long-term rentals. Immediate vehicle replacement in the case of a breakdown or accident is guaranteed. The rented vehicle may be returned to any of the rental locations at no extra charge.

**Rate: 1300–4415 CZK/day**  
**V Celnici 10, Prague 1**  
**Phone: +420 224 211 587**  
**[www.arentcar.cz](http://www.arentcar.cz)**  
**Opening Hours: Mon–Sun 07:00–19:00**

**JS-car**

Vehicles, mainly Skoda cars, are available for rent. Unlimited mileage is given on all rentals. 30% is added onto the rental fee for one-day rentals. Special offers for certain cars are provided for customers.

**Rate: 560–2100 CZK/day**  
**Psohlavců 1360, Prague 4**  
**Phone: + 420 602 216 415**  
**[www.iautopujcovna.cz](http://www.iautopujcovna.cz)**  
**Opening Hours: Mon–Sun 08:30–17:00**

**Car Rental Prague**

Car rental in the centre of Prague great prices a wide selection of cars Škoda and high class cars with automatic transmission VW Passat, Chevrolet... (station wagon, diesel motors). Car accessories children's car seat, ski racks, navigation. Car delivery to Prague airport Vaclav Havel, Hotel or in office near station metro Dejvicka line A.

**Svatovitská 7, Prague 6**  
**Phone: +420 602 722 501**  
**+420 222 947 511**  
**[www.carrental.cz](http://www.carrental.cz)**  
**[www.carrentalprague.com](http://www.carrentalprague.com)**

**Avis**

Approximately 5000 vehicles are at your disposal. The selection is conveniently divided according to the category of vehicles. Avis offers to arrange returning the car to other European countries than the Czech Republic.

**Rate: 35–132 Euro/day**  
**Klimentská 46, Prague 1**  
**Phone: 221 851 225**  
**[www.avis.cz](http://www.avis.cz)**  
**Opening Hours: Mon–Fri 08:00–16:30**



## Broadway Car Rental

Car Rental Broadway offers 50 new cars for hire (cars, vans, luxurious cars and also scooters and bikes). The main thing is providing the best service and lending quality cars at reasonable prices. In the equipment of a rented car can be always found a map of Prague and the Czech Republic. Another advantage of car rental Broadyway is non-stop reservation line, which is available to customers 24/7.

**Jindřišská 7, Prague 1**  
**Phone: +420 774 345 747**  
**www.rentcarprague.com**  
**info@rentcarprague.com**

**RENT-A-CAR**  
**RW RUNWELL**

- New cars with A/T, M/T
- Office and the parking place in the center of Prague
- All included
- Excess amounts up to 100%
- Online reservation discounts
- Free GPS
- Wi-Fi on the board
- 24/7 emergency service in English, Russian, Czech languages

**WEEKEND TARIFF**

**Czech DINNER for free!**

**+420 728 500 100**  
**www.runwellrentacar.com**  
**facebook.com/runwellrentacar**

\* Rent-a-car in Prague for more than 4 days

## ticket sales

### Ticketpro

**Prague Tourist Center – Rytířská 404/12, Prague 1. Opening Hours: Mon–Fri 09:00–19:00, Sat–Sun 12:00–19:00**

**Ticketpro Rokoko – Václavské náměstí 38, Prague 1. Opening Hours: Mon–Fri 11:00–19:00**

**Pražská informační služba – Rytířská 31, Prague 1. Opening Hours: Mon–Sat 09:00–19:00 – Staroměstská radnice, Prague 1. Opening Hours: Mon–Sat 09:00–20:00, Sun 10:00–19:00**

**Bohemia Ticket – Na Příkopě 856/16, Prague 1. Opening Hours: Mon–Fri 10:00–19:00, Sat 10:00–17:00, Sun 10:00–15:00. www.ticketpro.cz.**

### Ticketportal

**Via Musica – Malostranské náměstí 13, Prague 1. Opening Hours: Mon–Sun 10:30–18:00**

**Lucerna music Bar – Vodičkova 36, Prague 1. Opening Hours: Mon–Fri 10:00–13:00; 14:00–18:00**

**Divadlo Hybernia – Náměstí Republiky 4, Prague 1. Opening Hours: Mon–Sat 11:00–19:00**

**Roxy – Dlouhá 33, Prague 1. Opening Hours: Mon–Fri 10:00–18:00. www.ticketportal.cz.**

## SERVICE

### taxis

#### Cedaz Praha

Public shuttle bus from airport to the centre of Prague or back. Comfortable and direct transport from V Celnici street. Tickets can be bought directly from the driver.

**Phone: +420 220 116 758**

**www.cedaz.cz**

#### Taxi Praha

Taxi Praha offer the possibility of calling a taxi on-line. The fare can be calculated on the website. Trips are monitored by GPS for the customer's safety. Rate: without dispatcher 28 CZK/km in Prague, via dispatcher 24 CZK/km in Prague

**Vrchlického 9, Prague 5**

**Phone: + 420 222 111 000**

**www.taxi-praha.cz**

#### AAA Taxi

The customers are offered individual way of transport, which provides privacy, comfort and safety. AAA Taxi belongs to the cheapest ones in whole Prague. Rate: from 16.90 CZK/km in Prague

**Phone: +420 222 333 222**

**www.aataxi.cz**

#### Speed Cars

In spite of being a relatively new company on the market, Speed Cars have sparked great interest among customers. They provide an online fare calculator, as well as car pick-up. Rate: 19 CZK/km in Prague.

**Pacholíkova 4, Prague 2**

**Phone: 224 234 234**

**www.speedcars.cz**

FREE ☎ 800 870 888

**PRAGUE AIRPORT TRANSFERS**  
*feel the difference*®  
S. r. o.



# TRANSPORT TO / FROM AIRPORT

**TAXI** (max. 4 persons) **MINIBUS** (max. 8 persons)  
CZK 550 / EUR 20 CZK 780 / EUR 30

**SHUTTLE** (1 person, 2 persons)  
CZK 290 / EUR 11, CZK 450 / EUR 17

Recommended on:



**www.prague-airport-transfers.co.uk**



☎ 14 0 14

🌐 [www.aaataxi.cz](http://www.aaataxi.cz)



## CALL THE CHEAPEST AAA TAXI IN PRAGUE

**PRICE: CZK 16,90 per km**



+420 222 333 222  
+420 729 331 133



[www.aaataxi.cz](http://www.aaataxi.cz)

- quick & easy taxi order by mobile app
- nonstop taxi service
- we speak English
- free pick up service in Prague
- approximate price before the ride
- payment by credit card



## REGULAR SHUTTLE BUS • AIRPORT ↔ CITY CENTRE



COMFORTABLE AND DIRECT  
TRANSPORT FROM PRAGUE AIRPORT  
TO THE CITY CENTRE OR BACK

Airport bus stop – Arrival Terminal  
T1 exit F or T2 exit E

Bus stop – CITY CENTRE  
V CELNÍCI Street

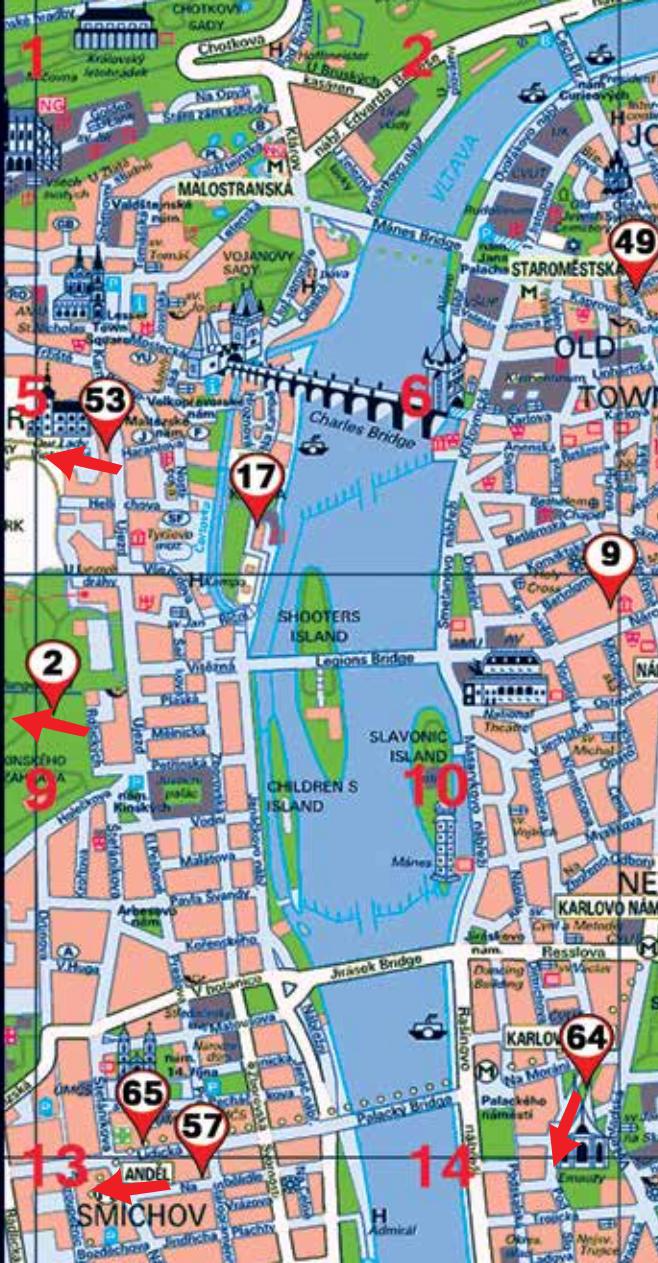
• NEXT TO METRO LINE B •

• 40 METRES FROM NÁMĚSTÍ REPUBLIKY •

**TICKETS CAN BE BOUGHT  
DIRECTLY FROM THE DRIVER**

[www.cedaz.cz](http://www.cedaz.cz)

- 2 METROPOLE ZLICIN
- 5 RESTAURANT ZVONICE
- 9 IMAGE THEATRE
- 11 BOLERO
- 17 KAMPA MUSEUM
- 27 SHOOPS GRANAT
- 41 GO-KART
- 49 RESTAURANT PIVRNEC
- 53 PRAGUE DEGUSTATIONS
- 55 HARLEY'S MUSIC BAR
- 57 BACK DOORS MUSIC BAR
- 61 DARLING
- 63 NEON CLUB
- 65 HELLS BELLS MUSIC BAR
- 64 SIMIX



13

SMICHOV

57

14

KARLOV 64

64

17

2

9

53

5

6

9

49







Try the  
on - line  
free map  
[www.pmap.cz](http://www.pmap.cz)





## FLORA

Wolkerova 17, Olomouc  
Phone: +420 585 726 111  
www.flora-ol.cz



Flora Olomouc with a rose garden, rockery and short-term exposures of spring and summer flora covers an area called Little Crown Fortresses in Bezruč orchard which is separated from the rest of the garden by the arm of the Morava River. Large area of seven acres with specific landscape concept with relaxation and instructive corners providing unrepeatabe perspectives into the historical city center which was built in the 60s of the last century. Part of the botanical garden is an unique rose garden with a collection that includes more than 600 varieties of large-flowered roses but colorful orchard, hydrangea, ground and original botanical roses.



## ARCIBISKUPSKÝ PALÁC

Wurmova 9, Olomouc  
Phone: +420 587 405 421  
www.arcibiskupskypalac.cz

The official residence of the Olomouc bishops and archbishops, a place where Franz Joseph I. succeeded to the throne and before the Battle of Austerlitz (Slavkov) Austrian Emperor and Russian Tsar held counsel and even the building in which the Empress Maria Theresa or Pope John Paul II. lived – That's all the Archbishop's Palace in Olomouc. The object of the second half of the 17 th century offers a guided tour within representation halls, in which have been preserved rich Rococo, Empire and Neo-Baroque decoration and furnishing. The building is accessible on wheelchair too. You can also use specialized haptic tours for visitors with visual handicap – these tours require prior reservation.

## ASTRONOMICAL CLOCK

Horní náměstí, 779 11, Olomouc  
Phone: +420 585 513 385

The Olomouc Astronomical Clock is situated in the northern facade of the Town Hall. It is set into a 14 m high pointed-arched recess. The present-day appearance of the Clock dates back to the 50s of the 20th Century and bears the traces of the former official aesthetic of socialist realism. The mosaic decoration of the Clock is made of various portrayals on the lateral sides of the recess depicting characteristic work for each month of the year. The author of the design, Karel Svoboda, introduced the folklore motif of the Ride of the Kings at the top of the recess. Figures representing the different working classes are depicted in the lower part of the mosaic decoration.



## FUNTANDEM

e-mail: [sima@funtandem.cz](mailto:sima@funtandem.cz)  
Phone: +420 603 178 385  
[www.funtandem.cz](http://www.funtandem.cz)



Do you desire an exceptional experience while not risk your health? Try a tandem parachute jump with proven professional tandem pilots who represent the Czech Republic in skydiving. Season 2015 in Olomouc starts in April and you can "jump" every weekend. Possibility of recording video in HD quality is a requirement. This life experience you definitely want to remember. And you will see Olomouc from the unique height.

## VLASTIVĚDNÉ MUZEUM

Nám. Republiky 5, Olomouc  
Phone: +420 585 515 111  
[www.vmo.cz](http://www.vmo.cz)

If you like to play, explore and discover, make a trip to the Natural History Museum in Manchester. Historical and naturalistic exposition includes over two and a half thousands of exhibits. A museum with valuable collections exhibits besides permanent expositions a number of exhibitions and educational programs. In the new expositions you can see the nature of the Olomouc region with the history of the city since the early Middle Ages to the present.



# Get to know Olomouc better!



Three-day stay for two from € 90!  
Special offers available at:

[www.stayovernight.eu](http://www.stayovernight.eu)



### COMPETITION

Win a weekend in Olomouc! Answer the current competition question at [www.stayovernight.eu](http://www.stayovernight.eu) and win a unique weekend stay for two in Olomouc and other great prizes.

## MAXLASERGAME

Plzeňská 1270/56, Prague 5  
Phone: +420 774 454 656  
[www.maxlasergame.cz](http://www.maxlasergame.cz)



You adore action, but fighting in muddy terrain isn't exactly what you need? Try Lasergame Prague arena, which is full of light and smoke effects. Thanks to our modern equipment you will have almost futuristic experience. After the game, you can relax in comfortable seat and enjoy the bar fully stocked with various refreshments. Lasergame can be played up to 16 players and truth is that more of them are participating in a game, more enjoyable it is, thus do not hesitate to recruit as many people as possible. More heads, more targets for your weapon. [www.maxlasergame.cz](http://www.maxlasergame.cz)



## CHEFPARADE

Bubenské nábř. 306/13, Hall n. 36  
Prague 7 - Holešovice  
Phone.: +420 733 738 521  
[www.chefparade.cz](http://www.chefparade.cz)

Do you want to taste the traditional Czech cuisine and learn to prepare „Brambořáčka“? Discover local culture through hands-on Cooking courses and Cooking shows at Chefparade, the best Cooking School in Prague. Cooking Class will introduce you to the typical Czech cuisine with you in the main role! Their hands-on courses give you the opportunity to cook side-by-side with our Chefs. Learn about the basic ingredients and spices. Fun and learning experience in one! Chefparade offers customized classes based on your meal preferences.

## NAM JAI MASSAGE

Kaprova 11, Prague 1  
Phone: +420 222 328 747  
[www.namjai.cz](http://www.namjai.cz)

NamJai offers an exceptionally wide range of massages and treatments that can help fight the ills of modern times. The massages release mental and physical tension, alleviate it or even completely eliminate back pain and headache, improve sleep, and provide an overall feeling of well-being. Besides of that it is helping the body to get rid itself of toxins deposited deep in the tissues, and regenerate overall. In addition, natural oils used to have beneficial effects on the skin. For maximal relaxation, massage is complemented with a half-hour herbal bath in a special steam box from Sri Lanka. Furthermore, you can choose between Ayurvedic oil cure and reflexive foot massage.



## KONOPIŠTĚ

Benešov

Phone: +420 317 721 366

[www.zamek-konopiste.cz](http://www.zamek-konopiste.cz)



Head to the charming place near Prague, where a passionate hunter, Franz Ferdinand d'Este, successor to the Austrian throne, lived. On guided tours you will see representative and guest rooms, a collection of weapons and hunting trophies, and even private rooms of Franz Ferdinand, which were created with the aim to maximize authenticity on the basis of archival materials, inventories of furniture and especially the imperial collection of photographs of photographer R. Bruner - Dvořák. A novelty since the last year has been a hunting route which connects the previous three tours and offers something extra - like a secret staircase in the tower.



## PAINTBALL PRAHA

Krejnická 2021 (OC Chrupa, Prague 4)

Phone: +420 777 099 099

[www.paintballgame.cz](http://www.paintballgame.cz)

Probably every guy was playing with soders. In the childhood it was enough to have few sticks instead of a gun. Later comes time for pc and consoles. But sitting on couch with a remote control in your hand isn't such a dangerous experience. Even the best games are not equal to the crawling through the woods with a few bullets in your short-gun, all friends are falled and enemies is coming to get you. THAT is the feeling which turns boys into a men and thatnks to Paintball Prague you can experience it in the indoor or outdoor space.



## KARLŠTEJN

[www.hradkarlstejn.cz](http://www.hradkarlstejn.cz)

Karlstejn Castle, a Gothic landmark on the south-west of Prague, established in 1348 by Karel IV., to keep precious crown jewels. It's not the only attraction of the popular Castle. The first guided tour includes space Imperial Palace and you can even see the Treasury in the Marian tower. The second circuit will then lead to the Great Tower with its famous chapel with panel paintings by Master Theodoric. Around the castle there are many restaurants and places to stay, making it ideal for Karlštejn trip on the weekend. This year's very often visited novelty is unique exhibition of treasures of Karlštejn in the former stables of the Imperial Palace celebrating the 700th anniversary of the birth of Charles IV.

## BLACK LIGHT ADVENTURE MINIGOLF

Opatovická 18, Praha 1  
Phone: +420 733 461 444  
[www.praguegolfandgames.cz](http://www.praguegolfandgames.cz)



Tourist attractions - check, Czech traditional food - check, now you looking for things to do? Come to our venue, where you can enjoy yourself and make the most out of your vacation time, play unique black light adventure mini golf, foosball, darts etc. or challenge your skills with the Czech Trap, authentic escape game. What can you expect? Fun afternoon or evening, glow sticks for everybody as well as UV/neon body crayons (if you want to get creative), 18 hole mini golf, beer & cider or sodas & juices, simply the most fun things to do in Prague you will find. Adult or Student Plus ticket special offers you unlimited mini golf game and two drinks of your choice.

## MERCURIA LASER GAME

Argentinská 38, Prague 7 - Holešovice,  
Phone: +420 605 111 811  
[www.mercurialaser.cz](http://www.mercurialaser.cz)

Mercuria Laser Game is the new and largest laser game arena in Prague, located just 3 minutes walk from the underground station Nádraží Holešovice. In this unique laser game you can enjoy an arena larger than 400 square meters. During the game you can listen to music from the cult movie Mortal Combat. You will really enjoy the victory. The winner gets a big Kofola or free beer for his invincibility. Both can be used in a wide space bar with more than 60 seats. In addition to the laser game, you can choose different form of entertainment: table football, darts or children favorite arcade games (motorcycles, cars and House of Dead.)



## PUZZLE ROOM

Čechova 10, Praha 7 - Letná 5  
Phone: +420 603 841 483  
[www.puzzleroom.cz](http://www.puzzleroom.cz)



One team locked in one room, one hour to escape. That's one of the most atmospheric live escape games in Prague called Puzzle Room. Have fun, use your brain, find clues and solve puzzles before time runs out... Its like a fortress Boyard just it will be your brain not muscles that will have to work hard. Puzzle Room is great activity for friends, families, couples or small company groups. For people of all ages that like fun, thrill and mysteries. Basically for everybody who wants to experience something unique. Three different game rooms, one endless fun!



## Indoor Go-Kart arena

PKA - Prague karting arena's raceway at Letnany, North Prague, is an excellent venue for individual drivers, private groups and corporate events. With its superb racing facilities and catering services, state-of-the-art race computer systems, multilevel track with 15 meters long bridge and fleet of expertly prepared karts, you can be assured of the thrills of wheel to wheel action that Karting in PKA provides.

PKA is widely recognised as the founder of modern go kart racing for teenagers & adults in Prague and have been at the forefront of indoor go Karting since 1999, developing the sport into one of the most exciting and accessible forms of motor racing today.

Indoor go Karting is not only a thrilling experience, but also great fun, and whether you are a novice or a potential Formula 1 driver, you will find that PKA's fast and furious go Karting race sessions are geared up to give you an adrenalin-filled event to remember!

The track is open all the year from Monday to Friday from 14.00 to midnight and from 10.00 am until midnight on Saturdays and Sundays.

They can be found on crossroads of Toužimská and Ašská street in Prague 9 - Letnany. You can use bus number: 158 from terminal station of Metro (underground) line "C" to station "Stare Letnany" it takes four minutes.

For reservations  
call: +420 777 311 856  
or visit [www.praguekartingarena.com](http://www.praguekartingarena.com)

## PRAGUE KARTING ARENA



# GO-KART

**INDOOR ARENA**

**Thrilling 600 meters long track with breathtaking 15 meters long bridge with special asphalt concrete illuminated with power LED technology.**

**12 fast Subaru 7hp go karts with computerized scoring system.**

**100 seats in bar-restaurant with the whole track view.**

**Easily accessed from the City centre by subway line „C”.**

**Special prices for stag and hen party groups !**

**Call +420 777 311 856 for reservation !**

## PROUD BEER

**B**eer has particularly in the Czech Republic a rich history and a very strong position. We consider it together with Jarda Jágr as our largest international gold and we're very proud.

We are not proud on the label "Czech beer" by a chance. This is one of the Czech symbols and since 2008 the name "Czech beer" is protected as a geographical indication. Overall, the Czech Republic for its production, which is about 20 million hectoliters of beer annually, is on the 15th place in the world. It is not a little amount on the small country in the heart of Europe.

Beer is also an important export article of the Czech Republic. Every year, the Czech Republic exports more than 2 million hectoliters. About 40% of exports go to Germany, followed by exports to Slovakia, Sweden, England and Russia.

So yes, we have a beer to be proud of and we rejoice with him. On the following pages you will find a tip on best beer in Prague. Taste it well!

th.



## HRNEČKU, VAŘ!

Janovského 919/36, Prague 7  
Phone: +420 720 039 949  
[www.restauracehrneckuvar.cz](http://www.restauracehrneckuvar.cz)



Who wants to feel like a fairy tale, you should go for a beer at the restaurant Hrnečku, vař! which is just three minutes walk from the tram Veletržní Palác (Fair Palace) and five minutes from metro station Vltavská. The dominant feature is the varied and changing offer of Czech beer specials from more or less known local breweries and offer quality Moravian wines from Znovín Znojmo and winery Grmolec. Of course there are the traditional Czech snacks, beer and Czech culinary classics but also international gastronomy lovers will get what they want. And a clear tip of the menu for beer enthusiasts? Sausages in dark beer!

## THE PUB

Veleslavínova 3, Prague 1  
Phone: +420 222 312 296  
[www.thepub.cz](http://www.thepub.cz)



The PUB has everything needed for a relaxing evening - modern facilities, fully stocked bar, delicious food and excellent service. But there is one essential detail, which will make the party better with an amazing experience, and which no other beer restaurants can offer - you can tap the beer by yourself in the each PUB! Tables have their own beer tap, from which flows a tank Pilsner Urquell. Each tap is equipped with a graphic touch screen which allows to track of tapped beer in the other pubs (which of course calls for competition), to call the staff, order food, play music from the jukebox, and much more.

## VINOHRADSKÝ PARLAMENT

Korunní 1, Prague 2  
Phone: +420 224 250 403  
[www.vinohradskyparlament.cz](http://www.vinohradskyparlament.cz)

The beer should be cold. This is not a fact to argue about. In Vinohradský Parlament they prove, that even classic Czech pub may have attractive modern style, they give special care to cooling. They dedicate the greatest possible care to beer and therefore they possess unique technologies for cooling beer, chilled glasses and water-chilled tanks. This all with emphasizing that each customer has the technological process of cooling and care before his eyes. You'll enjoy Staropramen 11, Staropramen black, Staropramen lager, Staropramen unfiltered and Staropramen light.



## MALOSTRANSKÁ BESEDA

Malostranské náměstí 35/21, Prague 1  
Phone: +420 257 409 104  
[www.malostranska-beseda.cz](http://www.malostranska-beseda.cz)

Pub Malostranské besedy is situated in the second part of the basement, which is accessible via a separate staircase from the entrance hall of the building. Style, equipment and coziness reminds traditional pub of Malá Strana (Lesser Side), which have been in Prague since ancient times. They serves particularly fast meals and small snacks to beer. Beer brands are represented by Pilsner Urquell and Kozel. It is a Czech pub as it should be - with great beer, good Czech food and pleasant service, where you will leave a good tip. It won't hurt you because the prices are set very rationally.



## U SEDLERŮ

Karlovo náměstí 17, Prague 2  
Phone: +420 221 986 345  
[www.usedleru.cz](http://www.usedleru.cz)

A place where you can really enjoy the beer and experience the environment of genuine Czech restaurant - it is Pilsner restaurant U Sedlerů, which is located on the ground floor of a beautiful Art Nouveau building right on the Charles Square (Karlovo náměstí). Until 1891 a brewery have been situated on the spot and U Sedlerů continues on the tradition. In the restaurant, you can enjoy delicious tank Pilsner Urquell and dark Velkopopovický Kozel. To a good beer naturally goes a good food, in this case, excellent home Czech cuisine. We should mention also different gastronomic specialties on weekends. Excellent tank beer and nice home atmosphere attract customers from near and far surroundings. Be one of them! You will certainly not regret it.

## NA BAŠTĚ

ALetenské sady 1574, Prague 7  
Phone: +420 777 244 459  
[www.obcerstveninabaste.com](http://www.obcerstveninabaste.com)

What about to combine delicious beer with a pleasant stroll? If you like to finish your „strolling around“ with a delicious beer, we have the perfect tip for you. The restaurant Na Baště, which is located in close proximity to the largest and most popular playground roughly in the middle of Letná with good accessibility from all directions. Park Letná is a wonderful place to stroll throughout the year. In the restaurant Na Baště you can relax your feet, enjoy good food, wi-fi and a large selection of beer (Staropramen 10 °, Stella Artois, Hoegaarden, Granat, wheat beer). In the case of interest there is not a problem to provide for wealthy catering for private events - barbecue of meats, hams and pigs and other popular dishes.



## BE FRIENDLY

Sokolovská 97/65, Prague 8  
Phone: +420 222 313 473  
[www.befriendly.cz](http://www.befriendly.cz)



Friendly atmosphere. That's exactly what defines the recently opened restaurant in Karlín, which bears really cool name Be Friendly. Except for several kinds of Staropramen (11 °, unfiltered, light, black, cut) you can enjoy top-fermented special dark beer from Belgium Leffe Brune, Hoegaarden White and Cider. Lovers of meat and pasta will get one's money's worth. Simultaneously, the menu includes daily specials for vegetarians. Ladies will certainly appreciate the wide range of delicious cocktails and fine wines. The restaurant is completely nonsmoking.



**HRNEČKU,  
VAŘ!**

**Welcome to the restaurant Hrnečku, vař!**  
We hope, you'll find our rotating offer of Czech beers from local "boutique" breweries interesting as well as wide choice of Moravian wines and typical Czech dishes. Enjoy!

Tel: +420 720 039949, Janovského 919/36, Praha 7  
[www.restauracehrneckuvar.cz](http://www.restauracehrneckuvar.cz)



# WHERE TO BEER

[www.potrefenahusa.cz](http://www.potrefenahusa.cz) | [www.vinohradskyparlament.cz](http://www.vinohradskyparlament.cz)



## POTREFENÁ HUSA

### HYBERNSKÁ

Dlážděná 1003, Prague 1

### DEJVICE

Zhořelecká 514/2, Prague 6

### PLATNĚŘSKÁ

Platněřská 88/9, Prague 1

### NÁRODNÍ TŘÍDA

Národní třída 364/39, Prague 1

### RESSLOVA

Resslova 1, Prague 2

### ANĚL

Nádražní 23, Prague 5

### NA VERANDÁCH

Nádražní 84, Prague 5

### ALBERTOV

Na slupi 2102/2b, Prague 2



## BOHNICE

Zhořelecká 514/2, Prague 8

## HOLEŠOVICE

Dukelských hrdinů 696/43, Prague 7

## HL. NÁDRAŽÍ

Wilsonova 300/8, Prague 2

## VINOHRADY

Vinohradská 104, Prague 3

## PANKRÁČ

Na Pankráči 129, Prague 4

## DBK

Budějovická 1667/64, Prague 4

## SPOŘILOV

Hlavní 2459/108, Prague 4

## CHODOV

Roztylská 2321/19, Prague 11

## VINOHRADSKÝ PARLAMENT

Koruenní 1, Prague 2



## KOZLOVNA APROPOS

Křížovnická 4, Prague 1  
Phone: +420 222 314 573  
[www.kozlovna-apropos.cz](http://www.kozlovna-apropos.cz)



Stylish pub in the middle of Prague? Definitely Kozlovna Apropos! The recently renovated restaurant focuses on traditional Czech cuisine with respect for authentic Czech recipes. In addition, in the restaurant there is a large lava grill situated, where food is prepared right before your eyes. As for the beer, you'll enjoy here Kozel directly from the tanks. The enterprise does not try to dazzle with high prices but high quality service, friendly imaginative decor, drinks and a wide selection of dishes. If you prefer a private company, not a problem to reserve a separate lounge in the basement.



## PIVOVAR U DOBŘENSKÝCH

U Dobřenských 268/3, Prague 1  
Phone.: +420 222 222 141  
[www.pivovaru Dobrenskych.cz](http://www.pivovaru Dobrenskych.cz)

When you go for a beer it's best to go to the source. U Dobřenských is a microbrewery with cooker 400 liters and four tanks, all on an area of only 14 m2. The tailor-made faucet encompasses four types of beer, so there are always served three types of permanent beers and fourth is regularly changed after several months. Permanent beers are Tribulus beer 14 °, Salvia Stout 14 °, a dark beer of STOUT type with sage and Lemongrass Ale 11 ° blended with lemongrass. You will also enjoy the typical Czech specialties such as roasted duck, ribs, rabbit stew, homemade sausages or homemade cakes with strawberries, cream cheese and crumbs.



## RADEGASTOVNA PERÓN

Stroupežnického 20, Prague 5  
Phone: +420 602 741 401  
[www.peronsmichov.cz](http://www.peronsmichov.cz)

### Unique tank beer

Radegastovna Perón as the only one in Prague offers you purely bitter 12 ° from the tank. Tank Radegast has the proper bite and is served with all the aromas and taste characteristics, as it got from brewer. Freshness is guaranteed with deliveries of beer to the premises directly from the brewery after racking.

[www.peronsmichov.cz](http://www.peronsmichov.cz)





**B**rewery Beroun Bear's unique „brewery open-air museum“ - offers interested parties to view the brewhouse beer for direct heating with wood. Beer is produced by bottom fermentation of traditional ingredients: fresh water, barley malt, hops and brewer's yeast. The supply of malt brewery soběstatečný - had its own malt house in the nearby village Suchomasty. Beer is presented to the consumer as unfiltered, yeast rich in vitamin B. Brewery Beroun bear lies on the route of hiking trails in the protected area of Czech Karst and Křivoklátské highlands. Availability brewery is 20 minutes from Prague on highway D5, exit Beroun - center, or 2 minutes from the train station.



Brewery Restaurant, Tyršova 135, 266 01 Beroun, [www.berounskymedved.com](http://www.berounskymedved.com),  
Tel.: +420 311 625 239



## GASTRO TIPS



### KATR RESTAURANT

Věžeňská 9, Prague 1  
Phone: +420 222 315 148  
[www.katrrestaurant.cz](http://www.katrrestaurant.cz)

This unique restaurant in the center of Prague combines grilled meat, Pilsner lager Pilsner Urquell and Nespresso coffee. For the design of Katr restaurant are responsible experienced architects who created the modern, airy and generous space where everyone will feel comfortable. Restaurant's capacity is 120 seats and unlike other establishments in Prague you can grill selected types of meat, fish or vegetables on your desk alone (grills are embedded directly in the tables).



### U PIVRNICE

Maiselova 3, Prague 1  
Phone: +420 222 329 404  
[www.upivrnice.cz](http://www.upivrnice.cz)

If a real Czech tavern is what you're after, you must be sure to check out the traditional pub U Pivrnice. One of the pub's most eye-catching elements are the comical hand-drawn pictures on the walls, featuring motifs of the legendary bar fly, Rudy Pivrnice. At U Pivrnice, good beer is usually served with traditional Czech specialties as well as (Try the Pivrnec guláš, a local dish which is best coupled with Pilsner Urquell, Gambinus or Kozel). If you aren't too partial to beer, choose from a wide selection drinks.



### CAFÉ V PARKU

Petřínské sady 98, Prague 5  
Phone: +420 603 554 520  
[www.cafevparku.cz](http://www.cafevparku.cz)

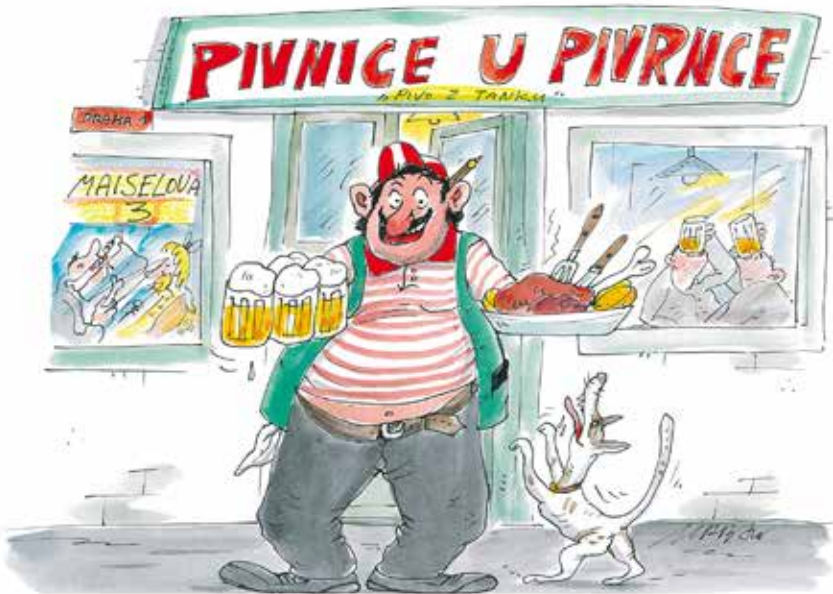
Café v Parku can be found in a truly unique environment of Kinský gardens. In the Middle Ages there were found gardens and vineyards. In the years 1827-1831, the prince Rudolf Kinský build an English park, which has changed in the current garden. In the first decade of the 21st century garden gradually underwent another renovations. And today there is also the Café v Parku, where you can enjoy not only excellent coffee and delicious cakes, but also feel a piece of history.



### KOPYTO

Bořivojova 883/116, Prague 3  
Phone: +420 774 666 604  
[www.kopyto.cz](http://www.kopyto.cz)

Kopyto offers a pleasant environment of modern restaurant (60 non-smoking seats) where you can enjoy dishes from traditional Czech cuisine, always made from fresh ingredients. As the only company in Prague they are offering specialties from Coypu, which is worth trying. Lovers of good beer will appreciate Pilsner Urquell tapped directly from the tank, then tapped Cider Kingswood or Moravia cask wines or brandy. This restaurant also offers table football, TV sport matches, free Wi-Fi and a garden with a grill and smokehouse.



**I**f you're looking to visit the only one of its kind pub in the center of Prague, where you'll eat, drink and most importantly laugh, you definitely must visit the original beer pub & restaurant "U PIVRNCI" ("At Pivrnec").

In Prague or anywhere else in the city or in the Czech Republic is it simply impossible to find similar place. "U PIVRNCI" is decorated with original cartoons that display traditional Czech jokes about the beer and the attitudes as well as affection the Czechs are having for their national drink.

**Е**сли Вам захочется посетить настоящий оригинальный и единичный чешский трактир в центре Праги, где возможно хорошо поесть, попить и главное насмеяться, то Вы необходимо должны посетить ПИВНУЮ У ПИВРНЦА. Ни в Праге, ни в другом месте Вы не найдёте одинаковый или похожий трактир.

ПИВНАЯ У ПИВРНЦА украшена оригинальными разрисованными анекдотами о пиве, которых в другом месте не видать. Кроме анекдотов Вам здесь найти даже самого Руду Пиврнца в натуральную величину, который вместе с Вами рад сфотографироваться.



M3

## CAFÉ RESTAURANT PRAGUE

Karlova 154/17, Prague  
Phone: +420 775 062 243  
Opening hours: 10-22h

This famous Café Restaurant Prague is located in the heart of old Prague center on the royal route. You can be pleased by stylish and comfortable interior, excellent international cuisine, delicious cakes and excellent Italian coffee brand Tonino Lamborghini. For your convenience you can find in Caffè Per Lei also Wi-Fi connection. We confirm the excellent and courteous service.



## RESTAURANT – CAFÉ SVATÉHO VÁCLAVA

Václavské náměstí 821/39, Prague 1  
Phone: +420 602 133 682  
[www.svatyvaclav.cz](http://www.svatyvaclav.cz)

Nicely furnished stylish restaurant in the center of Prague offers traditional Czech cuisine, which is cooked according to the original old Czech recipes from the finest ingredients. Even in the drink menu you can find the best from the Czech Republic – tapped Pilsner Urquell beer and quality Moravian wines. From Monday to Thursday there is live jazz music, freshly baked piglet everyday and entertaining man dressed in costume of Saint Wenceslas.



## THERAPY

Školská 30, Prague 1  
Phone: +420 774 491 177  
[www.cafe-therapy.cz](http://www.cafe-therapy.cz)

In the Školská street you can find an oasis of relaxation in the center of the Prague – café and restaurant Café Therapy. Aside of delicious food it's natural to divide the place into smoking and non-smoking area and wi-fi. For the little children there is a children's play area. It also includes a conference room in the back part of Café that is separated from the publicly accessible areas and is perfectly suited for celebrations and corporate events. The entire restaurant is fully accessible.



## KOGO

Havelská 499/27, Prague 1  
Phone: +420 224 210 259  
[www.kogo.cz](http://www.kogo.cz)

Magical atmosphere of the Old Town, flexous streets and passages. Here, in the shadow of grand church of st. Havel, is located restaurant Kogo Havelská. The restaurant offers some of the best gastronomic experience, delivering excellent Italian cuisine with Mediterranean flavors. It is based on high quality fresh ingredients imported directly from Italy, seasonal ingredients, homemade pasta, homemade desserts and bread. Summer garden is open from April to October.





## U KALICHA

Na Bojišti 12-14, Prague 2  
Phone: +420 224 912 557  
[www.ukalicha.cz](http://www.ukalicha.cz)

Whoever wants to taste the original Czech cuisine and enjoy the well-tempered beer has to come here to this place. "U Kalicha" was at the time of the legendary "Good Soldier Švejk" an ordinary pub. The building was rebuilt in 50s of the last century and that was the time that it gained today's level. Since then it is the popular culinary destination of Prague inhabitants and tourists. We recommend you to arrange a reservation, because thanks to its unique atmosphere it is a very popular and crowded place.



## CHAPADLO

Nuselská 44, Prague 4  
Phone: +420 241 404 337  
[www.chapadlo.com](http://www.chapadlo.com)

The restaurant Chapadlo in Nusle features a complex modern concept. Modern gastronomy goes hand in hand with well-sophisticated interior with clean lines and natural elements. Here are special offers of food prepared every month. You can find there even a 400g steaks. You can also use the offer of lunch menu. Drink arsenal in restaurant Chapadlo is filled with a wide offer of beers from Pilsner brewery and wines from the whole world.



## U SADU

Škroupovo náměstí, Prague 3  
Phone: +420 222 727 072  
[www.usadu.cz](http://www.usadu.cz)

Žizkov pub with a unique collection of antiques offers a non-smoking section, cellar seating, table football, jukebox, TV sport matches, wi-fi and at least 10 kinds of beer on tap including its own wheat unfiltered beer Sádek 11°. This pub is appreciated by late diners - from Tuesday to Saturday the kitchen works until 4AM! The menu is made up of Czech and international cuisine, including vegetarian dishes or breakfast and lunch menu. They will let you in even with a dog and as a souvenir you can get a beer gift basket.



## ISTANBUL KEBAB

Politických vězňů 933/17, Prague-Nové Město, Phone: +420 777 917 380  
[www.istanbulkebab.cz](http://www.istanbulkebab.cz)

The first kebab in Prague! Are you longing for Turkish food? Visit Istanbul Kebab. We recommend trying the Turkish pizza and you will be surprised with its form. Vegetarians will be able to choose meals too. As mentioned at the beginning, Istanbul Kebab belongs to the fast food category so the opportunity to take away your food is natural thing. However when you have time you can find seating there and you can taste the traditional Turkish tea along.



M8

## PIZZERIA RIALTO

Sokolovská 33, Prague 8 Karlín  
Phone: +420 602 661 444  
[www.rialtopizza.cz](http://www.rialtopizza.cz)

Does the name of this pizzeria sound familiar? It should, because it's named after the famous Venetian bridge Ponte di Rialto. Upon entering you will feel exactly the atmosphere of Italian famous seaside resorts in Italy. You can enjoy the view of the big picture of the mentioned bridge. Enjoy original Italian cuisine with notable flavors inspired from Napoli and northern Italy. In addition, from Monday to Friday at bargain prices, visit the lunch menu.



## TOVÁRNA NA ILUZE

Břehová 5, Prague 1  
Phone: +420 727 977 730  
[www.tovarnanailuze.cz](http://www.tovarnanailuze.cz)

An excellent Czech cuisine based on recipes from the so-called First Republic that was a unique refuge of democracy and modern life in Central Europe of the interwar period. We continue the tradition of then elegant restaurants where top quality and the satisfaction of guests were a matter-of-fact. Try the favourite cocktails of Czech film stars the way they enjoyed them at the time of the greatest splendour of Prague film studios at Barrandov, which film makers called Hollywood of the East.



M7

## BARISTA

Na Poříčí 24, Prague 1  
Phone: +420 727 963 540  
[www.archabarista.cz](http://www.archabarista.cz)

Symbiosis of an unique historic environment Czech Art Deco, the most recent of Czech design, the best artists, great coffee and Moravian wines of exclusive brand Barista's why it is worth to visit our café and concept store, love at first sight and regularly return. If you want to enjoy coffee in a totally unique environment that offers both culinary and cultural experience Barista is an ideal place to visit.



M6

## JOHN LENNON PUB

Hrozená 495/6, Prague 1  
Phone: +420 257 214 266  
[www.johnlennonpub.cz](http://www.johnlennonpub.cz)

Whether you love John Lennon's classic music, delicious beer or a good meal, the newly opened John Lennon Pub is the right place for you. It's a pub where you'll only hear the Beatles, with posters of Lennon on the walls and an original red telephone booth adding to the atmosphere. Out chef's specialty is baked smoked knee on black beer and of course Pilsner Urquell. The „golden drink“ is represented by Gambrinus, black Kozel and non-alcoholic Birrell.



## MYSTERY OF TRUFFLE HUNTING

+420 735 507 782  
PragueTruffle@gmail.com  
www.PragueTruffle.com

Experience unique truffle hunting demonstration with truffle hunter as your guide and Nela, the dog, in the surroundings of charming Prague Old Town. Touch and smell genuine truffles! Learn the secret lore of truffle hunters, look how to find this subterranean gems and finished it by excellent truffle dish in a restaurant nearby famous Charles Bridge.



## TASTE THE MOST EXPENSIVE FOODS

+420 735 507 782  
PragueDegustations@gmail.com  
www.PragueDegustations.com

Taste and enjoy the most exclusive foodstuff in the world in our unique degustation menu. Our black sturgeon caviar is sturgeon friendly, our truffles are hunted by specially trained dogs. Saffron is the most costliest spice in the world even more expensive than gold. Taste them all during our unrepeatable gourmet experience!

# Degustation of THE MOST EXPENSIVE FOODS

*in the world*



True  
**CAVIAR**



Special Gift  
FRESH  
TRUFFLES

Fresh Black  
**TRUFFLES**



Most precious spice  
**SAFFRON**

**PRAGUE**  
**DEGUSTATIONS**  
.com



## EL MOJITO CAFÉ

Dlouhá 31, Prague 1  
Phone: +420 776 872 989  
[www.elmojito.cz](http://www.elmojito.cz)

El Mojito Café Prague is so unique. You would hardly find any other type of business where they can serve you more types of Mojito as the name already suggests. If you are situated in the center of Prague, in the streets around Dlouhá Street we recommend you to go to one from the 25 kinds of Mojitos. You can find in El Mojito Café also delicious food to eat. You will be fascinated in a very cozy interior with a unique touch of coastal states.



## LOCA CAFE BAR

Smetanovo nábřeží 24  
Phone: +420 212 240 967  
[www.locabar.cz](http://www.locabar.cz)

Do you long for a pleasant stay with a view of not only the river bank, but also to Prague Castle and Charles Bridge? Delicious food, good drinks and attentive service? Then LOCA CAFE BAR is the right choice! You will enjoy this stylish new restaurant not only because of its location on the Smetana riverside but also for the interior and everything it has to offer. And is not that little!



## ČILI BAR

Kožná 33, Prague 1  
Phone: +420 724 379 117  
[www.cilibar.cz](http://www.cilibar.cz)

Very small bar with a tradition since 2005 is located in somewhat hidden and narrow street just a few steps from the Old Town Square. It is very popular with the local community, but it is also welcoming for tourists, who can expect an informal and often lively atmosphere of this place. Tourists have been visiting this place mainly due to extra hot Chilli shot, but they can also find a range of traditional cocktails as well, premium alcohol range is supplemented by a range of small snacks – tapas.



## BACK DOORS

Na bělidle 30, Prague 5,  
Phone.: +420 257 315 824  
[www.backdoors.cz](http://www.backdoors.cz)

The legendary cocktail music bar and restaurant situated on Smíchov, is located in the historic cellar near the metro station Anděl, offers an exclusive cocktail menu of classic cocktails of golden era in a unique design, professional service and quality cuisine. Several times a week there is live music and DJ sets. Back doors are backdoors of your entertainment.

**Where cocktails meet the party...  
...and everything Rocks...**

**MONDAY-SUNDAY FROM 20 TILL DAWN**



**Harley's Cocktail & Music Bar | Dlouhá 18, Praha 1**

**[www.harleys.cz](http://www.harleys.cz)**



## CLUBS & BARS TIPS



### HEMINGWAY BAR

Karolíny Světlé 26, Prague 1  
Phone: +420 773 974 764  
[www.hemingwaybar.cz](http://www.hemingwaybar.cz)

The bar inspired by legendary American author and journalist Ernest Hemingway, as one of the most famous bar lovers, who made famous many cocktails. He innovated known recipes himself. Hemingway bar also includes its favorite spirits. Absinthe, Rum and Champagne. The domain of Hemingway bar are first class cocktails prepared exclusively from premium and ultra-premium products and fresh fruit juices. You need to visit this place.



### ALOHA BAR

Dušní 31, Prague 1  
Phone: +420 602 251 392  
[www.alohapraha.cz](http://www.alohapraha.cz)

Anyone, who likes the exotic environment, definitely shouldn't miss Aloha Music Club & Cocktail Bar. A unique music club and bar, located just "five minute walk" away from the Můstek underground station and the Old Town Square, is one of the most exciting bars in Prague: style of Hawaiian Islands, great drinks and thematic events overflowing with popular island's atmosphere.



### GROOVE BAR

Voršilská 6, Prague 1  
Phone: +420 777 610 279  
[www.groovebar.cz](http://www.groovebar.cz)

New menu of cocktails based on spices and herbs was created in collaboration with the London cocktail scene. Extended range of gin and rum with absolutely unbeatable price of Zacapa and Saffron gin. A wide selection of wines from Moravia and Austria and tapped beer. All this can be enjoyed in a timeless Groove Bar, which is known for a unique industrial design, which can't be seen in the whole Prague. From Thursday to Saturday evening you can enjoy the DJs or live music.



### HANGAR BAR

Dušní 9/9, Prague 1  
Phone: +420 724 004 305, 602 251 392  
[www.hangarpraha.cz](http://www.hangarpraha.cz)

Do you want to enjoy the fire show full of adrenaline, excitement and sexy dance with the beautiful flight attendants in a unique environment in unique spaces that are using the legendary airlines Pan Am? With the Hangar bar you can't make a mistake. Relatively young club has style, excellent gastronomy, a wide range of drinks, handsome bartenders/pilots and waitresses/flight attendants.

WWW.BACKDOORS.CZ



Modern recipes of classic cocktails golden era...

# BACK DOORS

MUSIC BAR RESTAURANT



## Space for Your Senses



Back Doors star team is looking forward to your visit...

+420 257 315 824  REZERVACE@BACKDOORS.CZ



## SINFUL NIGHT LIFE OF

**W**hy will be deluding ourselves. Every good capital, whose streets pulsate with life, must have beside restaurants, bars, cafes and shopping centers also (as the novelists say) the houses of love. And even Prague is no exception. But before we go into its streets, let's make a small historic revision.

It is no longer the rule that these places are for desperate individuals. Time progressed. You can forget the red neon lights, a company of doubtful quality and cheating customers. Although the movies are convincing us that the so-called night clubs are cheap sources of vice, many psychologists have the opposite view: the company straggles

with excessive shame and these clubs can be the right medicine.

When was the phenomenon of night clubs or prostitution itself actually born? Well, not for anything they say that it's the oldest profession of the world. It is probable that prostitution has evolved from religious belief and rituals which were held to celebrate the goddess of fertility in the Middle-Age. In the 19th century it was strongly developed and reached all segments of society from politics to high art (for example Vincent Van Gogh lived for years with a Flemish prostitute).



Even fifty years ago, half of the prostitutes were involuntary. This should already be over. The paradox is that there were previously only 10% of prostitutes educated; now the 50% of them are college students. This is an education reform!

We know that it's not easy to find the right company in which you can feel natural and comfortable. Indeed, there are lots of them and if you had to visit them all, it would cost you the whole wealth.

For this reason, we are showing few short "best of" tips in the following pages. We guarantee that you definitely won't be bored. The ride full of excitement and beautiful women is awaiting!

*ml.*



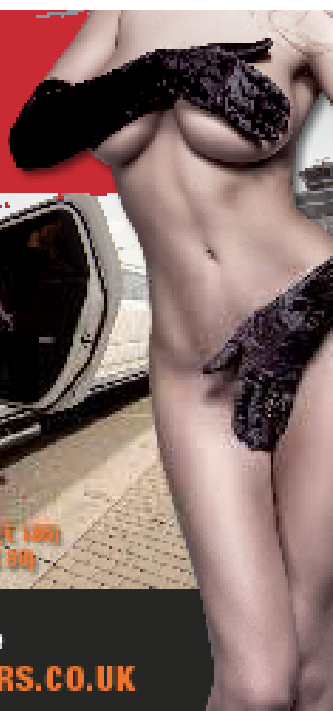
**Surprise your friends!**  
Who can prepare a stripper in your time



**Hummer H200 (max. 20 pax) 1-hour rental: CZK 4 650 (€ 180)**  
**Lincoln TC120 (max. 8 pax) 1-hour rental: CZK 1990 (€ 80)**

Call us on freephone 800 870 888 or +420 222 554 211,  
email us at [info@prague.co.uk](mailto:info@prague.co.uk) or book online at our website

**WWW.PRAQUE-AIRPORT-TRANSFERS.CO.UK**



## TIPS FOR RELAX



## LIVIA ESCORT

Phone: +420 728 675 947, 720 490 010  
[www.liviaescort.cz](http://www.liviaescort.cz)

Gentlemen, in case visiting men's night clubs isn't your cup of tea (but you'd still like to have some fun), try Livia Escort - a 24 hour service, where the ladies come to you - either straight to your home or to a one-hour hotel. Livia Escort offers much more than regular escort services. If you have a long business trip ahead of you, why not enjoy the company of one of Livia Escort's ladies? You'll see that even work can be fun. This escort guarantee absolute discretion. Each girl offers a given range of services.



## NIGHT CLUB 161

Sokolovská 1260/161, Prague 8  
Phone: + 420 284 810 262  
[www.club161.cz](http://www.club161.cz)

If you are looking for luxury and discreet nightclub near the city center, the Night Club 161 is what you are looking for. There are fourteen hot beauties (always Czech girls) waiting everyday and not afraid of fulfilling your every desire. Then, of course, discreet fun until early hours, a well stocked air-conditioned bar, 3x Jacuzzi, four cozy rooms, private secure parking and demanding V.I.P. apartment. Of course there is an escort service.



## 7TH HEAVEN

Náměstí Míru, Prague 2  
Phone: +420 727 938 675  
[www.eroticka-masaz-praha.cz](http://www.eroticka-masaz-praha.cz)

The 7 th Heaven spend directly heavenly relaxing experience. Traditional and experiential erotic massages with emphasis on delaying orgasm, massages of intimation areas in conjunction with beautiful and professional masseuses, that all will indulge a maximum relaxation. Three designed large rooms are equipped with heated pads for perfect enjoyment of the massage. Choice of massage with hot oil, nuru gel or soap. Massages in 7 Th Heaven are suitable for men, women and couples.



## EROTIC MESSAGES RELAX ANGEL

Street: Nádražní 21, Prague - Smíchov  
Phone: +420 607 023 032 (Nonstop)  
[www.relaxangel.cz](http://www.relaxangel.cz)  
@massageprague

Are you exhausted after a long day or a tiring journey? Enjoy the full-body relax and the most pleasant experiences with our young, beautiful masseuses. Get fresh energy for the next day during one of our exclusive massages. The masseuse may come to your hotel room or you can visit us in our luxurious lounge and enjoy a whirlpool or infrared sauna.



# DARLING®

☆☆☆ CABARET PRAGUE ☆☆☆

THE BIGGEST CABARET  
IN CZECH REPUBLIC

☆☆☆  
7 WORLD  
BEST  
EROTIC CLUB

350+  
other party  
Girls

BOTTLE 0,7l  
1.999,-  
everyday  
till 22:00

Special  
Offer

FREE  
TRANSFER

+420 732 250 555

HAPPY HOURS

50%  
ON ALL DRINKS

everyday till 22:00



CENTRUM, VE SMEČKÁCH 32, PRAHA 1

[www.darlingcabaret.com](http://www.darlingcabaret.com)

# IN WHICH CASES YOU HAVE TO BE !!!CAREFUL IN PRAGUE!!!



**P**rague is undoubtedly a beautiful city. It has a number of unique places where you can party all day and night. Complete paradise for tourists. And you know that paradise can easily become hell. Therefore, we bring you five tips on which cases you have to be careful.

## 1) Taxi drivers

This is the basis that applies absolutely in every big city. And Prague is not an exception. Of course, not every taxi driver is a thief. But as soon as a poorly paid driver (and it's not a dream job for sure) find confused tourist, he immediately turns this opportunity to get some extra money from you. You should know that the whole city center takes just few kilometers and it's simply not possible that someone pays 800 CZK for the route from the Old Town Square to the Peace Square (náměstí Míru). For that kind of money you could get to town 20 minutes from Prague!

Always be careful and watch the taximeter and check the boarding amount. And now we are slowly getting to the point two.

## 2) Exchange offices

We can say that those are the taxi drivers in static booths. They are behind a Plexiglas and tastefully blabbering numbers you don't understand. Do not be lazy and find out the currency by yourself. You must be able to count a little and as a result

you can save a lot of money. If you are lazy to count, pull out a bank note and burn it. That will be the same effect as walking into the exchange office unprepared.

## 3) Small shops

There are lot of small untrusted food shops in the center that value the goods 10 times more expensive than normal. Most of the time you can recognize them – they don't have price tags anywhere, their relatives fought in Vietnam War or they have contacts in Russia.

## 4) Around the Central Railway Station

There are places where even a born and raised Prague citizen doesn't dare to go after dark. The situation of the Central Railway Station is desperate. Every day you can see dozens of dubious existences sitting on the benches and spending time by sipping wine from boxes or another cheap alcohol. Among the Prague citizens the park is nicknamed as Sherwood. And it has its modern Robins Hood. The difference, however, is that they take everything from everybody. And that means that the fifth point is ...

## 5) Pickpockets

Pickpockets are everywhere and especially in Prague they have developed their noses for tourists. So be careful not to give them too much smell.

# NIGHT CLUB

Balbinova 733/21, Praha 2  
Phone: +420 733 121 022 -  
100m from Venceslav square

35 GIRLS  
EVERYDAY

FREE  
ENTRY

[NEONCLUB.CZ](http://NEONCLUB.CZ)





## LOST IN TRANSLATION: HOW TO USE CZECH EXPRESSIONS

A Czech will not tell you to “go to hell/fuck off”...they will ask you to “go to the woods!” (Do háje/ Do Prčíc).

A Czech does not blame things on “bad karma”...it’s more like “to shit in one’s shoes.” (Nasrat si do bot).

Czechs don’t “gate crash” or “party crash”...instead they “rub themselves in somewhere.” (Vetřít se někam).

For Czechs, something isn’t, “all Greek to me” but instead “a Spanish village to me.” (Je to pro mne španělská vesnice).

A Czech won’t say “It’s apples and oranges”...instead, it’s “a different kind of coffee.” (To je jiné kafe).

Czechs won’t say someone or something is “as useful as ”...they describe it more “as useful as an overcoat for the dead.” (Platný jak mrtvýmú zimník).

Czechs won’t call someone “absent minded”...they will say that person is “staring into stupid.” (čumět do blba).

Czechs don’t wake up “at the crack of dawn” ...they “get up with the chickens.” (Vstávat se slepicemi).

Czechs don’t get “speechless”...they “have a dumpling in one’s throat.” (Mít knedlík v krku).

A Czech will not admit to “besting” you... they will say they’ve “pushed you into their pocket.” (Strčit někoho do kapsy).

Czechs don’t “get into a pickle”... they are more likely “to be in the rice.” (Být v rěji).

Czechs don’t “kill two birds with one stone”...they “kill two flies with one hit.” (Zabit dvě mouchy jednou ranou).

Czechs won’t say something is “messy”... it’s more like a “brothel.” (bordel).

Czechs don’t “put pressure” on you... they “put the knife on someone’s throat.” (Dát někomu nůž na krk).

Czechs don’t go to “stag parties/bachelor parties”...they go on a “men’s ride.” (Pánšská jízda)

In the Czech Republic, it won’t “rain cats and dogs”... it “rains as if from a watering can” (Lije jako z konve).

Czechs don’t “cross their fingers” to wish good luck on someone...they “hold one’s thumbs.” (Držet (někomu) palce).

Czechs don’t “walkin into the lion’s den”...they “tease a snake with bare feet.” (Dráždit hada bosou nohou).

Czechs don’t “beat around the bush”... they “walk around hot porridge” (Chodit kolem horké kaše).

Czechs don’t get “fed up”...they “have their teeth full of it.” (Mám toho plné zuby).

Czechs will not wish you good luck by saying, “break a leg”...they will ask you rather to “break your neck.” (Zlom vaz).



# HELLS BELLS

ROCKIN' PUB PRAGUE



**METAL PARADISE IN THE CENTRE OF PRAGUE!**

Walk down the stairs to Mecca of all metalheads around the world and indulge yourselves in hard music!

Since 2000, supporters of the darkest music have been meeting in Anděl, one of the most trendy and hip parts of Prague.

In the stylish cellar bar, you can enjoy loud music, luxury beer and selection of quality beverages of all kinds.

All served by our fast and friendly service.

**See you in Hell(s Bells)!**

Na Bělidle 302/27, Praha,  
[www.hellsbells.cz](http://www.hellsbells.cz)



# TRAMVAJE a METRO v Praze

## Trams and Metro in Prague

Operational plan - Diesel power - Trams only - Winter 2015  
 Map - English version - Remained stations - March 2015



296 19 18 17  
 www.dpp.cz

Prague Metro  
 Městská PRAHA  
 Pražská  
 Dopravní  
 organizace

# Bontonland

VISIT THE BIGGEST ENTERTAINMENT STORE IN PRAGUE



## THREE FLOORS OF

CD | DVD | BLU-RAY | LP | T-SHIRTS | MUGS  
COLLECTABLES | ACTION FIGURES | MORE...

VÁCLAVSKÉ NÁMĚŠÍ 1, PRAHA 1

[WWW.BONTONLAND.CZ](http://WWW.BONTONLAND.CZ)



Porsche Cayenne Diesel 3,0L 2016 model



Jaguar XKR 5,0L 75ks - limited edition

## SHOWROOM

V.P. Čkalova 22/784, Prague 6

tel.: +420 222 956 066,

mobil: +420 777 735 877

e-mail: [autosalon@simix.cz](mailto:autosalon@simix.cz)

Mon - Fri: 8:00 - 18:00, Sat: 8:30 - 12:00

## SPARE PARTS

Sekaninova 18, 128 00 Prague 2

tel.: +420 261 214 535

mobil: +420 602 203 575

e-mail: [simix@simix.cz](mailto:simix@simix.cz)

Mon - Thu: 8:00 - 18:00, Fri: 8:30 - 17:00

For special occasion...  
rent a luxurious limousine Hummer H200!



...des bmw audi jaguar ferrari mercedes  
...des bmw audi jaguar ferrari mercedes jeep nissan  
...des bmw audi jaguar ferrari mercedes jeep nissan aston martin  
...des bmw audi jaguar ferrari mercedes jeep nissan aston martin bentley porsche  
...des bmw audi jaguar ferrari mercedes jeep nissan aston martin bentley porsche  
...des bmw audi jaguar ferrari mercedes jeep nissan aston martin bentley porsche  
...des bmw audi jaguar ferrari mercedes jeep nissan aston martin bentley porsche